

KNX

Gateways

DMX-IP & RS232/485-IP

Programmable via RS232 or Ethernet

Reconstructable

Downwards compatible

Firmware update possible

Supply with 24 V AC/DC

Status LEDs on housing front

High-capacity tool software

DMX-IP

Art.-No. 135 16 111

24 V AC/DC



KNX Gateway DMX-IP

Intelligent system device, RMD type, for coupling of DMX512 systems to the KNX/EIB. To this effect, the KNX gateway DMX-IP is connected with the KNX and the DMX512 bus. The gateway needs 24 V AC/DC supply voltage.

The following functions are supported:

- DMX master: routing of telegrams from KNX to DMX
- DMX slave: routing of telegrams from DMX to KNX
- Control of RGB or RGBW luminaires via special logic modules
- Master dimming object for RGB and RGBW group control
- Dimming out of the KNX via 1byte or 4bit
- Assignment of several group addresses per DMX channel
- Max. 2000 group addresses / max. 1024 objects
- Programming either via RS 232 or Ethernet
- The gateway is downwards compatible to older product versions
- Firmware updates possible
- Reconstructable

By means of the tool software DMX-Gate2 the gateway is configured and the connection between the DMX512 devices and the KNX group addresses is made. DMX-Gate2 offers separate configuration of KNX objects and logic modules to configure RGB or RGBW luminaires as group. In this case, the required communication objects for the DMX channels are created automatically. Via a master dimming object (1byte) all assigned RGB channels can be dimmed by percentage comfortably with only one KNX group address. Absolute (1byte) or relative (4 bit) KNX-dimming can be configured.

It is not possible to send illegitimate telegram contents. Programming is effected either via RS232 or Ethernet interface.

The DMX-Gate2 supports reading of already configured gateways (reconstruction) and programming of the physical address of the KNX project.

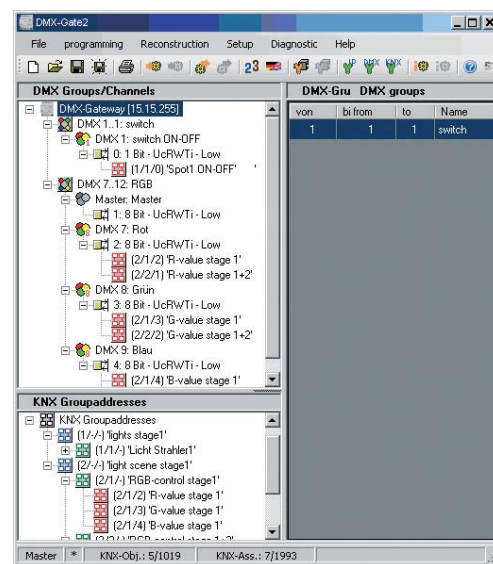
Note:

DMX multi master operation requires a DMX Merger. Depending on the data direction desired, the KNX gateway can be programmed either as DMX master or as DMX slave. For bi-directional data transfer two gateways are needed.

The tool software DMX-Gate2 can be downloaded free-of-charge in German and English language at www.elka.de.

Technical data

- auxiliary supply: 24 V DC +/- 10 % or 24 V AC +/- 10 %, 50-60Hz
- power consumption: max. 2 VA
- connection: screw terminals*
- supply voltage KNX: 21 - 32 V DC
- power consumption KNX: typ. 150 mW
- connection: terminal block
- coupling to foreign systems: DMX In (screw terminals*) or DMX Out (screw terminals*) GND (screw terminals*)
- terminating resistance DMX: 120 Ω (external)
- programming: 1 x RS232 (SubD 9-pole) 1 x Ethernet (RJ45, 8/4-pole, 10 Mbit/s)
- protection type: IP 20 DIN 40050
- housing: 4 TE (approx. 70 mm)
- fastening: DIN-rail EN 50022
- ambient temperature: -5 °C to +45 °C
- storage / transport temperature: -25 °C to +70 °C
- * screw terminals: single-wire: 0.50 to 4.0 mm² finely stranded without wire-end sleeve: 0.34 to 4.0 mm² finely stranded with wire-end sleeve: 0.14 to 2.5 mm²



Description	Type	Art.-No.	€/pc*	PU
KNX Gateway	DMX-IP	135 16 111	769.00	8
Power supply 24 V DC (1 TE)	SV230-24.0400DC	140 01 913	59.00	9
Power supply 24 V AC (4 TE)	SV230-24.1AC	110 01 924	65.00	3

RS232/RS485-IP

Art.-No. 135 16 101

24 V AC/DC

**KNX Gateway RS232/485-IP**

Intelligent system device for coupling of different foreign systems with RS232/RS485 or Ethernet interface to the KNX/EIB. To this effect, the gateway is coupled to the KNX and the foreign system is provided with a standard RS232, RS485 or Ethernet interface. The gateway needs 24 V AC/DC supply voltage.

The following functions are supported:

- Routing of telegrams from KNX either to RS232, RS485 or Ethernet
- Routing of telegrams from RS232, RS485 or Ethernet to KNX
- Freely definable strings for connection of devices with firm protocol
- Sending of pre-defined E-mails in case of alarm or error messages
- Tracing of telegrams for diagnosis purposes
- Baud rate to the subsystem to be set
- Transmission behaviour to the subsystem to be configured
- Limitation of KNX telegram rate to be chosen
- Max. 2000 group addresses (depending on resources)
- The gateway is downwards compatible to older product versions
- Firmware updates possible

By means of the tool software KNX-Gate the gateway is programmed either via the Ethernet or the RS232 interface. The gateway operates with ELKA standard ASCII protocol or with freely definable strings and thus allows variable protocol connection to terminating devices with serial interface like e.g. beamer or TV-devices.

Depending on the configuration, communication is effected via RS232, RS485 or Ethernet. Independent of the configured communication path, it is always possible to send an E-mail in case of trouble.

For diagnosis purposes, via RS232 or Ethernet a Trace mode can be activated in the KNX-Gate to check the data transmitted between KNX and the subsystem. The KNX gate supports reading out of already configured gateways (reconstruction) and programming of the physical address of the KNX project.

For diagnosis purposes, a Trace mode is available in the KNX-Gate.

Note:

You can create a protocol adaptation in the KNX-Gate yourself or inquire it with us.

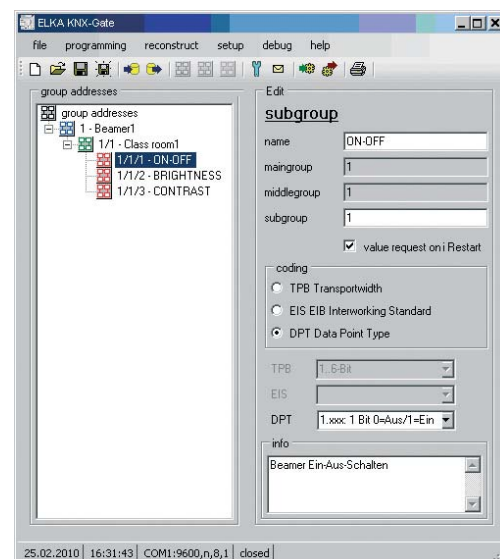
Technical data

- auxiliary supply:
 - 24 V DC +/- 10 % or
 - 24 V AC +/- 10 %, 50-60Hz
- power consumption: max. 2VA
- connection: screw terminals*
- supply voltage KNX: 21 - 32 V DC
- power consumption KNX: typ. 150 mW
- connection: terminal block
- coupling to foreign systems:
 - 1 x RS232 (SubD 9-pole) or
 - 1 x RS485 (screw terminals *) or
 - 1 x Ethernet (RJ45, 8/4-pole, 10 Mbit/s)
- protection type: IP 20 DIN 40050
- housing: 4 TE (approx. 70 mm)
- fastening: DIN-rail EN 50022
- ambient temperature:
 - 5 °C to +45 °C
- storage / transport temperature:
 - 25 °C to +70 °C
- * screw terminals:
 - single-wire: 0.50 to 4.0 mm²
 - finely stranded without wire-end sleeve: 0.34 to 4.0 mm²
 - finely stranded with wire-end sleeve: 0.14 to 2.5 mm²

OEM-gateways:

On request, the system can be adapted to a foreign system.

The tool software KNX-Gate can be downloaded free-of-charge in German and English language at www.elka.de.



Description	Type	Art.-No.	€/pc.*	PU
KNX Gateway	RS232/485-IP	135 16 101	769,00	8
Power supply 24 V DC (1 TE)	SV230-24.0400DC	140 01 913	59,00	9
Power supply 24 V AC (4 TE)	SV230-24.1AC	110 01 924	65,00	3

Download

Please use our online service. At www.elka.de you can download technical data and texts for invitation to tender to our products.

ELKA-Elektronik GmbH

Hohe Steinert 10
D-58509 Lüdenscheid

Phone +49 (0) 2351 176-1890
Fax +49 (0) 2351 176-1780

sales@elka.de
www.elka.de

