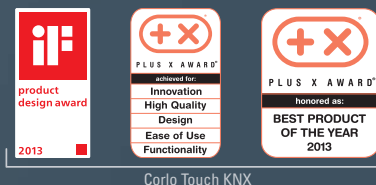


NEW
made in germany

2014

elsner®
elektronik



Corlo Touch KNX



System Corlo

SYSTEM CORLO

Real glass surfaces and chrome plated metal frames make the touch displays, push buttons and power outlets of System Corlo a highlight of high class interiors.

The System Corlo frames are available with a matt or glossy finish, custom colours for an individual interior design are also possible. Your colour concept can be further customised with the Corlo Touch's variable ambient lighting. For display, push button and power outlet, you have a choice of white or black glass surfaces.



Corlo Touch white, in 3-gang
matt chromed frame

Corlo Touch KNX Touch Display

- The **Corlo Touch KNX** display can be used as a touch switch, for automatic settings and as an info screen
- 10 display pages can be configured individually, with areas for operation and display (e.g. switch, rocker, rotary control and value display)
- Includes large set of icons. You can load your own icons from Micro-SD Card
- The brilliant 3.5" screen is also ideally suited for displaying photos
- Touch-sensitive glass interface
- Matt or glossy chromed edge (custom colours on request), white or black glass
- Ambient lighting with individually variable colours (RGB)
- Proximity sensor allows switching on approach and fast activation of the display from standby mode
- Brightness sensor for automatic adaption of the display lighting
- KNX connection for data transfer
- 4 inputs (as binary inputs or for temperature sensor)
- Micro SD card slot, e. g. as storage for image data. USB Interface

- Internal automatic functions for ventilation, shading (solar/visual protection), room climate control (heating, cooling) and light
- Internal scene control, timer and wake-up function
- 4 AND and 4 OR logic gates (each with 4 inputs, output in each case 1 bit/2×8 bits)
- Mounting with Frame Corlo in socket as single, dual or triple device

- Operating voltage: 12...24 V DC

Corlo Touch KNX WL model: W-LAN interface allows e.g. smartphone control, display of web pages and IP camera images

Accessories: (not included)

- T-NTC temperature sensor

Corlo Touch KNX		Corlo Touch KNX WL	
White, glossy edge	N° 70258	White, glossy edge	N° 70252
Black, glossy edge	N° 70259	Black, glossy edge	N° 70253
White, matt edge	N° 70260	White, matt edge	N° 70254
Black, matt edge	N° 70261	Black, matt edge	N° 70255



Corlo Touch black,
in 1-gang glossy chromed
frame

Corlo Push Buttons M-T

- Matt or glossy chromed edge (custom colours on request), white or black glass
- Available as single push button Corlo M1-T and as double push button Corlo M2-T
- Integrated temperature sensor T-NTC
- Mounting with Frame Corlo in socket
- Approx. 80 × 71 × 12,5 (W × H × D, mm)

Corlo Push Buttons M1-T	
White, glossy edge	N° 70282
Black, glossy edge	N° 70283
White, matt edge	N° 70284
Black, matt edge	N° 70285

Corlo Push Buttons M2-T	
White, glossy edge	N° 70286
Black, glossy edge	N° 70287
White, matt edge	N° 70288
Black, matt edge	N° 70289



Corlo Push Buttons M-T,
in glossy chromed frame

Corlo Power Outlet

- Matt or glossy chromed edge (custom colours on request), white or black glass
- Integrated increased contact protection
- Mounting with Frame Corlo in socket
- Approx. 80 × 71 × 12,5 (W × H × T, mm)

Corlo Power Outlet	
White, glossy edge	N° 70318
Black, glossy edge	N° 70319
White, matt edge	N° 70330
Black, matt edge	N° 70331



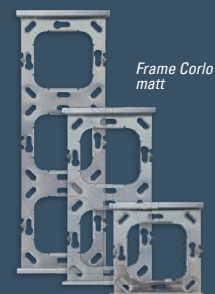
Corlo Power Outlet
in glossy chromed frame

Frame Corlo

- 1-gang approx. 80 × 81, 2-gang approx. 80 × 153, 3-gang approx. 80 × 224 (W × H, mm), mounting depth approx. 12,5 mm
- Matt or glossy chromed zinc-diecast (custom colours on request)

Frame Corlo gloss	
1-gang	N° 70264
2-gang	N° 70265
3-gang	N° 70266

Frame Corlo matt	
1-gang	N° 70267
2-gang	N° 70268
3-gang	N° 70269



Frame Corlo
matt

KNX WEATHER SENSORS

The weather stations and sensors provide the current meteorological data for KNX networks.

The compact devices feature a combined fixture for wall/pole mounting and are configured by means of the ETS.

The **brightness sensor** not only recognizes sunlight, but also twilight. For this, filters simulate the spectral sensitivity of the human eye.

The electronic **wind sensor** works noiselessly and reliably, even during hail, snow and subzero temperatures. Turbulent air and anabatic winds in the vicinity of the weather station are recorded, too. The measuring surface of the **precipitation sensor** is heated, so that humidity dries immediately. On the one hand, this prevents false reports caused by fog or dew. On the other hand, the sensor recognizes quickly when it has stopped to rain or snow.

The **temperature sensor** transfers the outdoor temperature exactly and reliably to the KNX system.

Devices with **GPS receiver** calculate the position of the sun, output the local time and are able to switch time functions (daily/week time switch). The output of the integrated **logic gates** can be set to 1 bit or 2 x 8 bits according to your needs.



*Suntracer KNX sl
N° 70154*



*Suntracer KNX sl light
N° 70155*



*Suntracer KNX sl basic
N° 70156*



Weather Station **suntracer® KNX sl**

- Temperature sensor (-30...+50°C)
- Brightness sensor (0...150 000 lx)
- Wind speed sensor
- Precipitation sensor with 1.2 watt heating
- Switching outputs with limit values
- 8 AND and 8 OR logic gates (4 inputs each)
- 4 comparators/difference modules (2 inputs 1 byte/2 byte each, each output 1 bit or 2x1 byte)
- Housing for surface mounting, IP 44, white/translucent
- Approx. 62 x 71 x 145 (W x H x D, mm)
- Operating voltage: 12-40 V DC (12-28 V AC)

Suntracer KNX sl:

- Air pressure sensor 300-1100 hPa
- GPS receiver
- Calculation of the position of the sun, e. g. for tracking of shading elements and photovoltaic modules
- Calendar time switch (3 annual terms with 2 daily periods), week time switch (4 daily periods)
- Shading control for 8 fronts with tracking of the slats and shadow edge and with frost protection

Suntracer KNX sl light:

- GPS receiver
- Calculation of the position of the sun
- Shading control for 5 fronts without tracking of the slats and shadow edge

- Calendar time switch (3 annual terms with 2 daily periods), week time switch (4 daily periods)

Suntracer KNX sl basic:

- Without GPS receiver and time functions
- No automatic shading control

Wind Sensor KNX W sl

- Wind speed sensor
- 3 switching outputs with limit values
- 8 AND and 8 OR logic gates (4 inputs each)

- Housing for surface mounting, IP 44, white/translucent
- Approx. 62 x 71 x 145 (W x H x D, mm)
- Operating voltage: 12-40 V DC (12-28 V AC)

Rain Sensor KNX R sl

- Precipitation sensor with 1.2 watt heating
- 1 switching output
- 4 AND and 4 OR logic gates (4 inputs each)

- Housing for surface mounting, IP 44, white/translucent
- Approx. 62 x 71 x 145 (W x H x D, mm)
- Operating voltage: 12-40 V DC (12-28 V AC)

Rain/Wind Sensor KNX RW sl

- Wind speed sensor
- Precipitation sensor with 1.2 watt heating
- 4 switching outputs, 3 adjustable limit values
- 8 AND and 8 OR logic gates (4 inputs each)

- Housing for surface mounting, IP 44, white/translucent
- Approx. 62 x 71 x 145 (W x H x D, mm)
- Operating voltage: 12-40 V DC (12-28 V AC)

Brightness/Wind Sensor KNX LW sl

- Brightness sensor (0...150 000 lx)
- Wind speed sensor
- 9 switching outputs with limit values
- 8 AND and 8 OR logic gates (4 inputs each)

- Housing for surface mounting, IP 44, white/translucent
- Approx. 62 x 71 x 145 (W x H x D, mm)
- Operating voltage: 12-40 V DC (12-28 V AC)



KNX W sl
N° 70158



KNX R sl
N° 70159



KNX RW sl
N° 70162



KNX LW sl
N° 70164





KNX SENSORS FOR OUTDOOR OR INDOOR APPLICATION

The outdoor sensors are suitable for outdoor use because of their sturdy housing and protection category. But they can also be used indoors, like in storage buildings or production facilities. Some models can process mixed values (e. g. room average). For this purpose values of other sensors are received via the bus and mixed with the own measured values (percentage can be adjusted). Comparators output minimum, maximum or average values of any 1 or 2 byte input values (output 1 bit or 2 x 1 byte). The output of the integrated logic gates can also be set to 1 bit or 2 x 8 bit, according to your needs. The automatic functions and controllers are configured by means of the ETS.

Brightness Sensor Vari KNX 3L

- 3 brightness sensors
- For indoor and outdoor application
- Mixed value brightness 1/2/3
- 16 switching outputs with limit values
- 4 comparators/difference modules (2 inputs each)

- 4 AND and 4 OR logic gates (4 inputs each)
- Housing for surface mounting, IP 44
- Approx. 65 x 80 x 30 (W x H x D, mm)
- Operating voltage: bus voltage

Temperature Sensor Vari KNX T

- Temperature sensor
- For indoor and outdoor application
- Calculation of mixed values
- PI controller for heating/cooling
- 4 switching outputs with limit values

- 4 comparators/difference modules (2 inputs each)
- 4 AND and 4 OR logic gates (4 inputs each)
- Housing for surface mounting, IP 44
- Approx. 65 x 80 x 30 (W x H x D, mm)
- Operating voltage: bus voltage

Combined Sensor Vari KNX TH

- Temperature sensor
- Humidity sensor
- For indoor and outdoor application
- Calculation of mixed values
- PI controller for heating, cooling, humidification and de-humidification
- 8 switching outputs with limit values

- 4 comparators/difference modules (2 inputs each)
- Actuating variable comparator
- 4 AND and 4 OR logic gates (4 inputs each)
- Housing for surface mounting, IP 44
- Approx. 65 x 80 x 30 (W x H x D, mm)
- Operating voltage: bus voltage

Combined Sensor Vari KNX TH-D

- Temperature sensor
- Humidity sensor
- Air pressure sensor
- For indoor and outdoor application
- Calculation of mixed values
- PI controller for heating/cooling (temperature)
- PI controller for ventilation (humidity)

- 12 switching outputs with limit values
- 4 comparators/difference modules (2 inputs each)
- Actuating variable comparator
- 4 AND and 4 OR logic gates (4 inputs each)
- Housing for surface mounting, IP 44
- Approx. 65 x 80 x 30 (W x H x D, mm)
- Operating voltage: bus voltage



Vari KNX 3L
N° 70382



Vari KNX T
N° 70385



Vari KNX TH
N° 70386



Vari KNX TH-D
N° 70388





Vari KNX 3L-T
N° 70383



Vari KNX 3L-TH
N° 70384



Vari KNX 3L-TH-D
N° 70389



Vari KNX GPS
N° 70387

Combined Sensor Vari KNX 3L-T

- 3 brightness sensors
- Temperature sensor
- For indoor and outdoor application
- Calculation of mixed values, also internal brightness 1/2/3
- PI controller for heating/cooling
- 20 switching outputs with limit values
- 4 comparators/difference modules (2 inputs each)
- 4 AND and 4 OR logic gates (4 inputs each)
- Housing for surface mounting, IP 44
- Approx. 65 x 80 x 30 (W x H x D, mm)
- Operating voltage: bus voltage

Combined Sensor Vari KNX 3L-TH

- 3 brightness sensors
- Temperature sensor
- Humidity sensor
- For indoor and outdoor application
- Calculation of mixed values, also internal brightness 1/2/3
- PI controller for heating/cooling (temperature)
- PI controller for ventilation (humidity)
- 24 switching outputs with limit values
- 4 comparators/difference modules (2 inputs each)
- Actuating variable comparator
- 4 AND and 4 OR logic gates (4 inputs each)
- Housing for surface mounting, IP 44
- Approx. 65 x 80 x 30 (W x H x D, mm)
- Operating voltage: bus voltage

Combined Sensor Vari KNX 3L-TH-D

- 3 brightness sensors
- Temperature sensor
- Humidity sensor
- Air pressure sensor
- For indoor and outdoor application
- Calculation of mixed values, also internal brightness 1/2/3
- PI controller for heating/cooling (temperature)
- PI controller for ventilation (humidity)
- 4 comparators/difference modules (2 inputs each)
- Actuating variable comparator
- 28 switching outputs with limit values
- 4 AND and 4 OR logic gates (4 inputs each)
- Housing for surface mounting, IP 44
- Approx. 65 x 80 x 30 (W x H x D, mm)
- Operating voltage: bus voltage

GPS Receiver Vari KNX GPS

- Output of UTC, local time and mounting position
- For outdoor use
- Housing for surface mounting, IP 44
- Approx. 65 x 80 x 30 (W x H x D, mm)
- Operating voltage: bus voltage

KNX ACTUATORS

Actuators control blinds, awnings, roller shutters or windows in the KNX system. The automatic may be provided externally or internally. The internal automatic of the actuators of the KNX S series offers numerous options for blocking, locking (e.g. master-slave) and priority settings (e.g. manual – automatic). Movement positions and sequences may be stored and recalled via the bus. The slats of blinds can be tracked according to the position of the sun. The setting is accomplished by means of the ETS.

Actuators KNX S1R-UP

- Low-wearing relays that switch in zero crossing of electric tension
- Motor run time variable by ETS parameters or active current metering
- 16 channel scene control
- Analogue/digital inputs (e. g. for temperature sensor T-NTC or button Corlo M-T):
KNX S1R-B4-UP with 4 inputs,
KNX S1R-B2-UP with 2 inputs,
KNX S1R-UP without inputs
- Flush mounting in a socket
- Approx. 50 x 50 x 54 (W x H x D, mm)

230 V version:

- For one drive (1x up/down) or two switched devices (2x on/off), max. 230 V AC, fused with T4.0 A
- Operating voltage: bus voltage
- Automatic functions for shading, window

24 V version:

- For a 24 V DC polarity changer motor
- Operating voltage: bus voltage
- Automatic functions for shading, window



KNX S1R-UP
N° 70201 (230 V)

KNX S1R-B2-UP
N° 70202 (230 V)

KNX S1R-B4-UP
N° 70203 (230 V)
N° 70206 (24 V)

Actuators KNX S1E-UP

- Non-wearing electronical output
- Motor run time variable by ETS parameters or active current metering
- Automatic functions for shading, window
- 16 channel scene control
- Analogue/digital inputs (e. g. for temperature sensor T-NTC or button Corlo M-T):
KNX S1E-B4-UP with 4 inputs,
KNX S1E-B2-UP with 2 inputs,
KNX S1E-UP without inputs
- Flush mounting in a socket

- Approx. 50 x 50 x 54 (W x H x D, mm)

230 V version:

- For a drive (1x up/down), max. 230 V AC, fused with T4.0 A
- Operating voltage: bus voltage

PS version (24 V):

- For a 24 V DC polarity changer motor, integrated power supply (230 V AC to 24 V DC 0,5 A)
- Operating voltage: bus voltage



KNX S1E-UP
N° 70207 (230 V)

KNX S1E-B2-UP
N° 70208 (230 V)

KNX S1E-B4-UP
N° 70209 (230 V)

KNX S1E-B4-UP PS
N° 70205



KNX S1-B2
N° 70380

KNX S2-B6
N° 70381

Multifunctional Actuators KNX S2-B6 and KNX S1-B2 230 V

- Outputs 230 V AC, each for one drive (1x up/down) or two switched devices (2x on/off)
- Motor run time variable by ETS parameters or active current metering
- Automatic functions for shading, window, light
- 16 channel scene control
- Modular device with push buttons and LEDs
- Operating voltage: 230 V AC

KNX S2-B6 230 V:

- 2 multifunctional outputs 230 V AC
- 6 binary inputs (direct operation/bus key)
- 6 units, approx. 107 x 88 x 60 (W x H x D, mm)

KNX S1-B2 230 V:

- 1 multifunctional output 230 V AC
- 2 binary inputs (direct operation/bus key)
- 3 units, approx. 53 x 88 x 60 (W x H x D, mm)

KNX POWER SUPPLY UNIT



N° 70145

Router with Power Supply KNX PS640+IP

- 1 Output for KNX bus voltage, reduced, output current of max. 640 mA, short-circuit proof
- 1 Output for 24 VDC, not reduced, output current of max. 150 mA
- Logging and display of special operating conditions such as short circuit, electrical surge, overcharge or excess temperature
- Connected bus participants can be reset at the device
- Bus connector for data transfer to line/main line/area
- Bus functions: transfer of malfunction messages and operating data, time/period reset, storage of malfunction messages
- Ethernet connection by RJ45 connector
- Routing (Ethernet as fast backbone for KNX data)
- Application as KNX line coupler
- Tunneling (bus access via IP, remote maintenance via LAN)
- Modular device 7 width units, white
- Approx. 123 x 89 x 61 (W x H x D, mm)
- Operating voltage: 230 V AC

VENTILATION CONTROL

The Ventilation Controls combine sensor technology and control engineering in a compact 55 mm housing. The setting of the nominal value is carried out on the device itself via its integrated buttons and display. The connected window or ventilation unit can be controlled directly through the buttons on the device. Analog outputs (0... 10 V) pass on measurements to other systems if needed. Inputs enable the automatic to be interrupted by external switch signals (from push buttons, timer, motion detector, rain alarm).

Indoor Sensor with Ventilation Control TH PF-U and AQS/TH PF-U

- For 1 window or ventilation unit (outputs potential free, 48 V/100 mA)
- Automatic function for ventilation (1- or 2-step control)
- Adjustable automatic reset time after manual operation (5...120 min.)
- For indoor use
- Display showing measurements and setting menus
- Push buttons for manual operation (open/close) and for automatic settings
- 2 inputs for central command (on permanent voltage priority over local operation and automatic, e. g. for rain alarm from rain sensors R24 V or RW-PF)
- For wall mounting in a socket
- Housing plastic white (glossy), aluminium, anthracite or stainless steel (painted, matt)
- Completion with frame of the switching series used in the building (not included in scope of delivery)
- Dimensions of housing approx. 55 x 55 (W x H, mm), mounting depth 15 mm
- Operating voltage: 24 V DC

TH PF-U:

- Temperature sensor (-10...+50°C)
- Humidity sensor (0...95%rF)
- Voltage outputs (0...10 V) for temperature value and humidity value

TH PF:

- Temperature sensor (-10...+50°C)
- Humidity sensor (0...95%rF)

AQS/TH PF-U:

- Temperature sensor (-10...+50°C)
- Humidity sensor (0...95%rF)
- CO₂ sensor (0...2000 ppm)
- Voltage outputs (0...10 V) for temperature value, humidity value, CO₂ value

AQS/TH PF:

- Temperature sensor (-10...+50°C)
- Humidity sensor (0...95%rF)
- CO₂ sensor (0...2000 ppm)



TH PF-U

N° 40100 (white)
N° 40101 (alu)
N° 40102 (anthracite)
N° 40103 (stainless steel)

TH PF

N° 40110 (white)
N° 40111 (alu)
N° 40112 (anthracite)
N° 40113 (stainless steel)



AQS/TH PF-U

N° 40105 (white)
N° 40106 (alu)
N° 40107 (anthracite)
N° 40108 (stainless steel)

AQS/TH PF

N° 40115 (white)
N° 40116 (alu)
N° 40117 (anthracite)
N° 40118 (stainless steel)



NG AQS/TH PF
N° 40120

Power Supply for Ventilation Controls NG AQS/TH PF

- For easy connection of 230 V window motors and ventilation units to ventilation controls AQS/TH PF(-U) und TH PF(-U)
- Drive output 230 V / 4 A
- 24 V DC power output for supply of the sensor
- Flush mounting in a socket
- Approx. 50 x 50 x 54 (W x H x D, mm)
- Operating voltage: 230 V AC



RF-WL
N° 60538

Wireless Ventilation Module RF-WL

- Wireless control for ventilation units WL400 and WL800
- A signal at the motion detector input starts ventilation (extraction with 40%)
- Additional ventilation levels can be triggered via inputs (60%, 80%, 100% ventilation performance)
- Flush mounting in a socket
- Approx. 50 x 50 x 54 (W x H x D, mm)
- Operating voltage: 230 V AC

| POWER SUPPLY UNITS



PS1000
N° 20202

PS5000
N° 20203

24 V DC-Power Supply Units PS1000 und PS5000

- For 24 V DC Devices
 - Input voltage: 230 V AC, 50 Hz
 - Output voltage: 24 V DC
 - Modular device
 - Approx. 53 x 90 x 50 (W x H x D, mm), 3 units
- PS5000:**
- Input voltage 230 V AC or 275-350 V DC
 - Adjustable output 24-28 V DC, max. 5 A / 120 W
 - Approx. 108 x 95 x 69 (W x H x D, mm), 6 units
- PS1000:**
- Output 1000 mA / 24 W

RELAY

Potential-free Relay RP-H

- Transfers control commands to other systems, e.g. heat and smoke extraction system or 24 V drive system (with power disconnection by the control device)
- Output 24 V-polarity changer motor
- Modular device 3 width units, approx. 53 x 90 x 50 (W x H x D, mm)
- Control input (up/down): 230 V AC, 50 Hz
- Output: potential-free, max. 230 V, each 1 A



RP-H PW
N° 2022

ACCESSORIES FOR WS1® AND WS1000®

Indoor Sensor WG AQS/TH-UP

- Wireless communication with central unit
- Housing plastic white (glossy) or alu (painted, matt)
- For wall mounting in a socket
- Including frame (housing compatible with all 55 mm series frames)
- Operating voltage: 7...30 V DC
- Radio frequency 868,2 MHz
- Measurement of temperature, air humidity and CO₂ content



WG AQS/TH-UP
N° 20553 (white)
N° 20554 (alu)



P04i-GPS Weather Station

- For WS1 and (KNX) WS1000 Color/Style
- Temperature, precipitation, wind speed and brightness recording
- Sun position calculation by the control system
- GPS receiver (time, position)
- Combi mount for wall/pole mounting
- Housing for surface mounting, IP 44, white/translucent
- Approx. 62 x 71 x 145 (W x H x D, mm)
- Operating voltage: 24 V DC



N° 30136



P04i-W Wind Sensor

- Wind Sensor for WS1 and WS1000 Color/Style in conjunction with P03i/P04i Data Collector
- Housing for surface mounting, IP 44, white/translucent
- Approx. 62 x 71 x 145 (W x H x D, mm)
- Operating voltage: 24 V DC



N° 30137





ErP2015
ÜBERTRIFFT DIE NORM



VENTILATION UNITS FOR AIR EXTRACTION AND RECIRCULATION

Motorised ventilation equipment ensures a comfortable climate in the conservatory if airing through windows is inadequate due to the building's layout, or is unwanted due to security risks. The ventilation units extract (exhaust) or recirculate (recirculation) air. The fans are particularly quiet when running.

The ventilation units communicate via radio with the WS1 and WS1000 Color/Style controls. Alternatively, the equipment can be connected directly with the Remo 8 wireless remote control or the solar radio button Corlo P RF. The ventilation unit can be automatically activated with a motion sensor via the RF-WL module. Recirculation mode is used for better heat recovery in your room and thus saves heat energy. Well timed air recirculation can also reduce condensation effectively. The controls detect critical temperature and dew point conditions using a special calculation method. This starts recirculation mode even before moisture settles.

Due to their low installation height, the fans fit under an exterior sun screen, such as an awning. Owing to their completely silicone-free processing, the installation alongside self-cleaning panes is possible. When the fan is shut off, the closure flap is closed with high contact pressure. Together with the self-limiting flap motor, this guarantees a tight closure of the ventilation aperture.

WL Ventilation Units

- Exhaust and recirculation modes (heat recovery, condensation reduction)
- Integrated temperature sensor (for recirculation)
- Panel compression strength approx. 350 kPa
- U-value approx. 0.9 W/m²K
- Available for roof sloping from 0° to 90°
- Wireless frequency 868.2 MHz
- Standard colours: similar to RAL 9016 traffic white, RAL 9006 aluminium white, RAL 9007 aluminium grey
- Custom colours available as per RAL (extra charges apply), coating with custom colour powder possible
- Standard panel approx. 1050 x 30 x 580 (W x H x D), can be trimmed
- Custom panel dimensions and heights available, extra charges apply
- Fan dimensions: Depth approx. outside 304 mm, inside 254 mm

Standard panel WL

N° 60461 WL800, RAL 9016
N° 60462 WL800, RAL 9006
N° 60463 WL800, RAL 9007
N° 60465 WL800, custom, 1-colour
N° 60466 WL800, custom, 2-colour
(N° 60471-N° 60476 WL800 pre-cut)

N° 60481 WL400, RAL 9016
N° 60482 WL400, RAL 9006
N° 60483 WL400, RAL 9007
N° 60485 WL400, custom, 1-colour
N° 60486 WL400, custom, 2-colour
(N° 60491-N° 60496 WL400 pre-cut)

- Installation height approx. outside 150 mm, inside 165mm (when panel is 30 mm high, other heights result in a corresponding change of inner installation height)
- Operating voltage: 230 V, 50 Hz

Ventilation Unit WL400

- Air volume extraction max. approx. 277 m³/h (net)
- Infinite variation, power consumption approx. 4 W (minimum speed) up to 62 W
- Fan width: approx. 379 mm

Ventilation Unit WL800

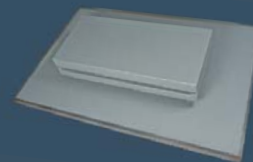
- Air volume extraction max. approx. 555 m³/h (net)
- Infinite variation, power consumption approx. 8 W (minimum speed) up to 124 W
- Fan width: approx. 651 mm



red dot award 2014
winner



Inside View WL800, white
RAL 9016, fine structure



Exterior View WL800, grey
RAL 9007, fine structure



Exterior View WL400, white
RAL 9016, silk gloss



www.elsner-elektronik.de

Elsner Elektronik GmbH • Herdweg 7 • 75391 Gechingen • Germany
Nr. 50365 • Version: 07.04.14 • Technical modifications and errors reserved.

elsner[®]
e l e k t r o n i k