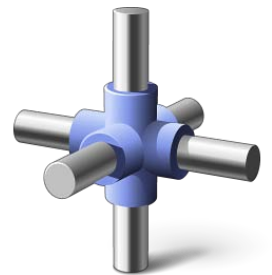


NETxAutomation Software Solution  
THE FINAL PIECE TO YOUR PUZZLE

 **NETxAutomation**  
Software GmbH

NETxLAB®  
OPC BRIDGE 1.1



Member of the KNX Association  
Member of the OPC Foundation

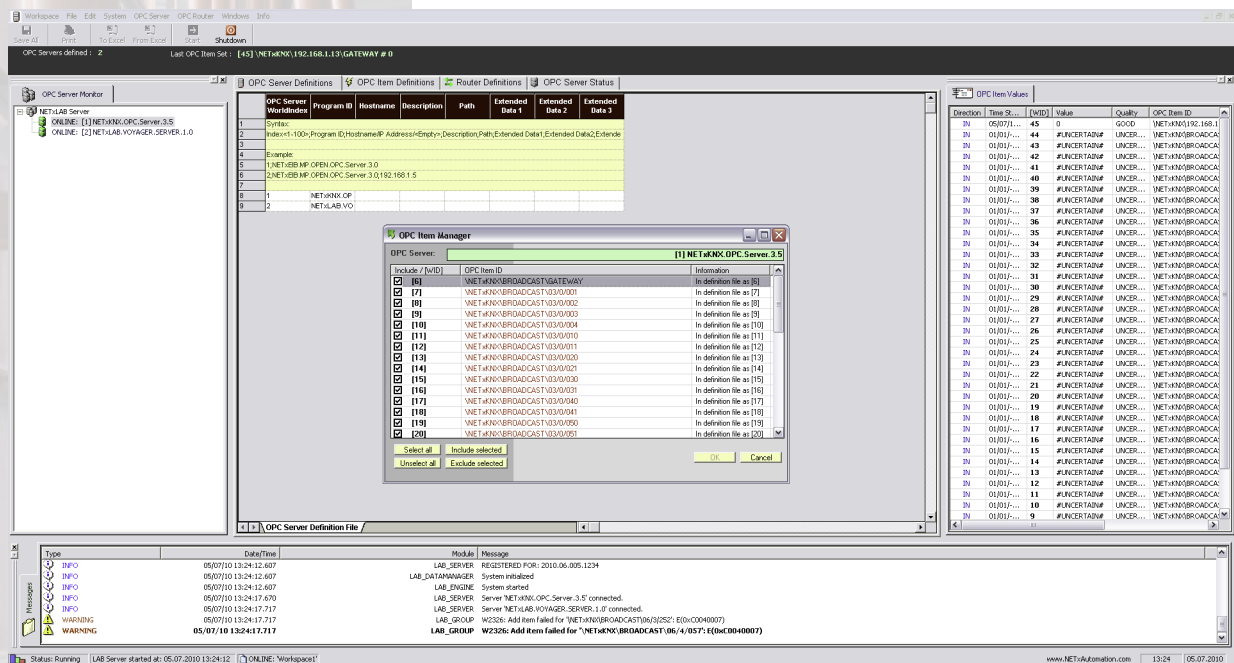


Based on interface OPC Data Access 2.0 the **NETxLAB® OPC Bridge** allows the connection from and to different OPC servers. With it you have the possibility to control and visualize different OPC Servers in one system and it describes so a bridge between the world of KNX and other systems.

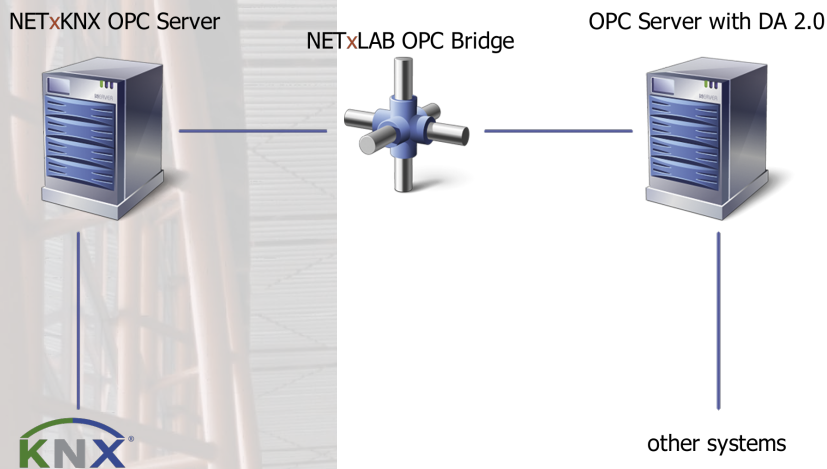
The experience, the „Know How“, which we gained from large projects, was used optimally in the development for a series of new products. Also this system is designed and realised as an open and user friendly product.

The **NETxLAB® OPC Bridge** manages up to 100 OPC servers and guarantees a stable and secure connection between the defined data points.

The **NETxLAB® OPC Bridge Studio** is used for the user interface:



## configuration example



## basic features

- ▶ Up to 100 OPC Server with DA 2.0 Interface
- ▶ Up to 1.000.000 data points
- ▶ Extended data routing functionality
- ▶ Interface: OPC Data Access 2.05b async

## application areas

Each other OPC DA 2.0 Server for

- ▶ LON<sup>®</sup>
- ▶ SPS<sup>®</sup>
- ▶ BACKNET<sup>®</sup>
- ▶ PROFIBUS<sup>®</sup> and
- ▶ other systems

can be integrated into the KNX system with the NETxLAB<sup>®</sup> OPC Bridge.

presented by:

