

 NETxAutomation Software Solution

THE FINAL PIECE TO YOUR PUZZLE

# ■ ■ NETxAutomation Software GmbH

For your innovative and reliable  
Building Automation Solution

Member of the KNX Association  
Member of the OPC Foundation





# NETxAUTOMATION SOFTWARE GMBH

## company profile

The NETxAutomation Software GmbH, founded in 2001, is a globally operating Austrian company and develops software solutions for building automation.

As a shareholder of the KNX Association and member of the OPC Foundation, and many development agreements with leading companies, our solutions are based on international standards and future-oriented technology.

2008 our NETxKNX® OPC Server line was also recommended by the KNX Association. We are very pleased with this recommendation as it rewards our commitment to continuous development, stability and availability.

The key objectives of our business - innovation and reliability, are found in all the products again. For the innovative software solutions we utilize leading technologies and our IT know-how enables us to support you in your efforts towards a perfect solution.

In more than 30 countries around the world our software is used. The diversity of the realized projects ranges from family homes to the largest projects in the world.

Our sales partner are worldwide electrical planers, electricians and system integrators for KNX, which we can offer attractive conditions and excellent sales support.



## PRODUCT OVERVIEW

innovative software solution for building automation

### NETxKNX® OPC SERVER

central KNX data server

page 4-5

### NETxLAB® VOYAGER

professional KNX visualization

page 6-7

### NETxLAB® VOYAGER GLOBAL VISUALIZATION

visualization at the highest level

page 8-11

### NETxLAB® SERVER INTERFACES

extensions for OPC Server and Voyager Server

page 12

### NETxLAB® OPC BRIDGE

OPC data bridge

page 12

### NETxLAB® SHUTTER CONTROL SYSTEM

for automatic shading over KNX

page 13

### NETxLAB® MARS

energy management system for your KNX plant

page 13





# NETxKNX® OPC SERVER

central KNX data server

The NETxKNX® OPC Server solution is the core of modern KNX projects - here all data is managed centrally.

The system consists of two main parts: the OPC server and the OPC Studio.

The OPC server is an autonomous program that carries out and controls the entire process.

The OPC studio with its user friendly interface is a port between the server and the administrator.

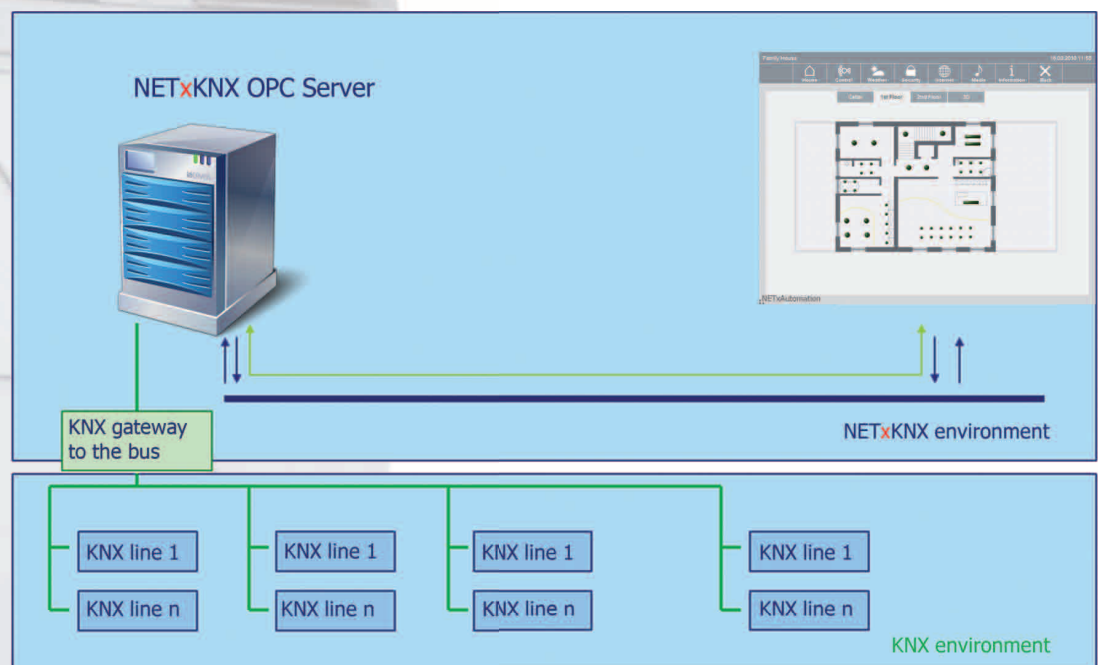
The system enables the control and in conjunction with a suitable OPC client the visualization of small to the largest KNX projects.

The experience and the "know how", which has been gained in large projects, could be used optimally in the development of a number of small systems.

So it is designed as a reliable, open and user friendly system and integrated in more than 1000 projects.

The OPC server is used almost in all areas of building automation and has now become a global standard in the world of KNX.

example of an OPC system structure:



## NETxKNX® OPC SERVER

### main features

► **Reliability**

designed and developed for long term operation

► **Scalability**

up to 1.000 IP gateways and more than  
200.000 data points can be managed

► **Performance**

enormous data transfer – up to 1.000 telegrams per second

► **Central monitoring**

OPC Studio offers  
telegram and data point value monitoring

► **Redundancy**

permits coupling of 2 OPC servers for even more reliability

► **Clustering**

Increased availability through networking of multiple OPC Server

### supported gateways

#### NETxKNX® OPC Server 3.5 Direct(KNX)

- ▶ for all KNX interfaces:  
USB, RS232, EIBLib, NETIP Tunneling NETIP Routing
- ▶ maximum one gateway is supported

#### NETxKNX® OPC Server 3.5 UnifiedDriver

- ▶ for all KNX IP Router and KNX IP interfaces:  
ABB, b.a.b-tec (eibnode), Berker, Gira, Merten, Siemens, ...
- ▶ up to 1.000 IP gateways are supported
- ▶ active monitoring of physical devices



# NETxLAB® VOYAGER

professional KNX visualization

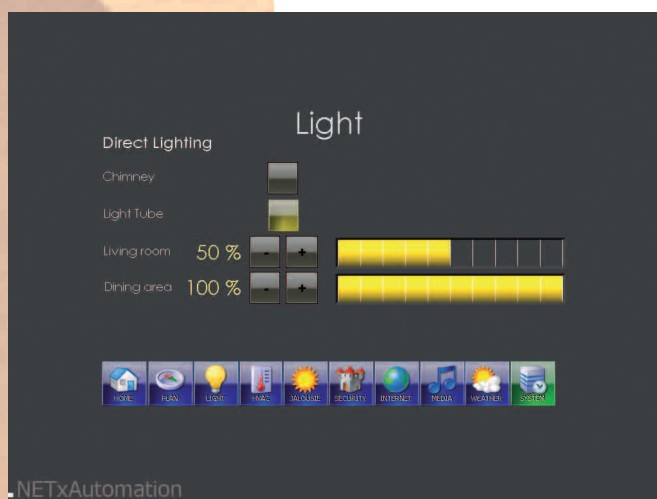
The NETxLAB® Voyager offers you in design and configuration of your visualization almost limitless graphical possibilities.

Easy creation, handling and operation of the Voyager let you set up large scale projects very easily and fast. As a result the Voyager can be used anywhere in automated building management.

Whatever you wish to control, like shutters and jalousies, adjustment of the lighting, heating/cooling systems, the energy consumption of your electrical appliances, surfing the Internet or the connection to a Hotel Management System –

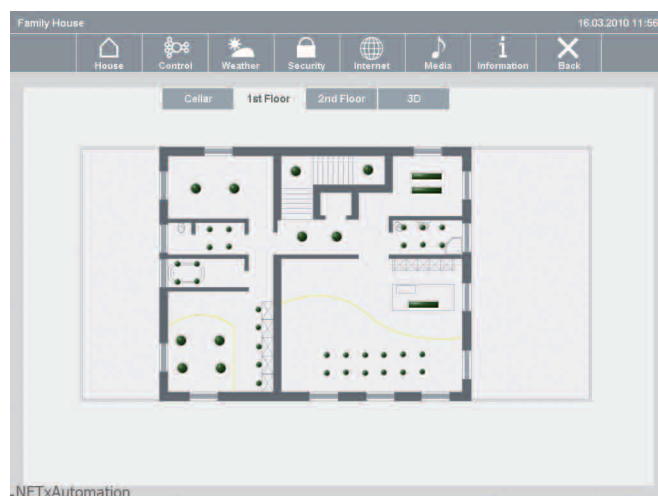
you can quickly realize professional visualizations in a reliable, open and awesome user friendly system.

## ► Freedom of Design



The new **NETxLAB® Button Editor** allows you to create custom specified control elements. You can choose from many templates and icons to create your own individual buttons for your projects.

The look of the display, the depth of the details and the graphic design of your control elements can be self defined. All popular image formats are supported. The Voyager offers a variety of possibilities.





## NETxLAB® VOYAGER

### main features

#### ► User convenience

Project realization using the Drag&Drop feature allows you to achieve a complex visualization in the shortest of time.

Voyager makes creation and commissioning projects faster than ever. Also the library function allows highest user comfort.

#### ► Extended features

The Voyager 4.1 offers full Calendar functionalities, Scene-, User and Alarm management as well as the Eventor and the Processor.

#### ► Unlimited possibilities

From family homes to airport projects.

The Voyager makes any imaginable visualization possible.

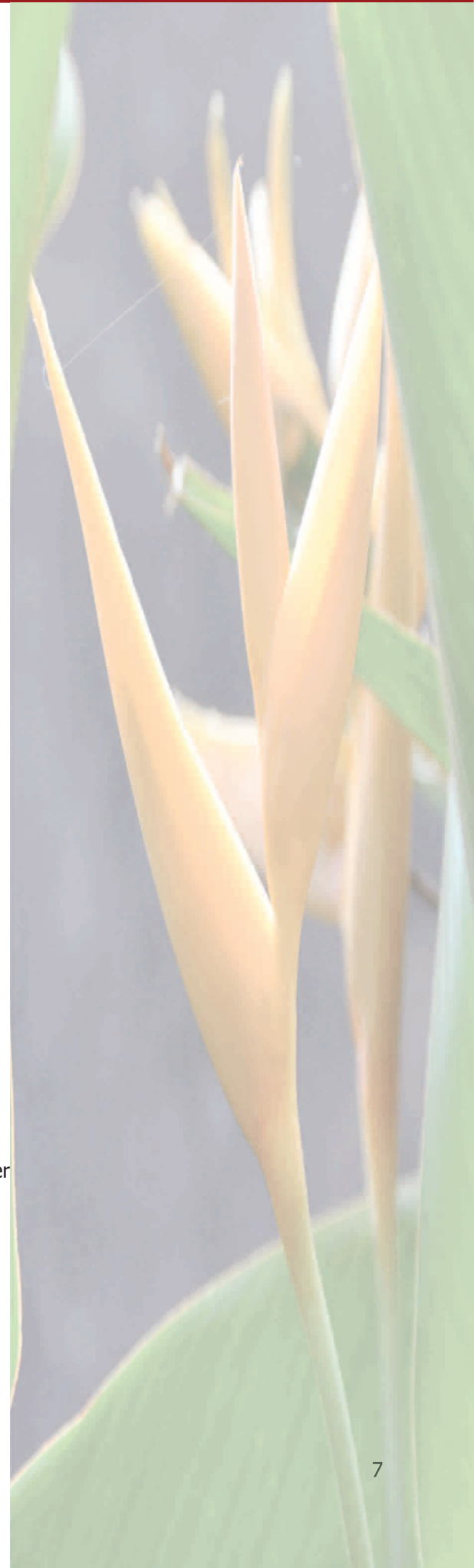
### expansion stages and interfaces

#### NETxLAB Voyager 4.1 Direct(KNX)

- as Stand Alone Solution for your home
- all official KNX protocols are supported
- for any KNX gateway
  - **Home:** max. 400 elements / 20 pages
  - **Basic:** max. 1000 elements / 50 pages  
included Script Processor Module

#### NETxLAB Voyager 4.1 OPC

- in connection with an OPC DataAccess Server
- VNET connection to NETxKNX® OPC Server and NETxLAB® Voyager Server
  - **Home:** max. 400 elements / 20 pages
  - **Basic:** max. 1000 elements / 50 pages  
included Script Processor Module
  - **Professional:** max. 10.000 elements / 200 pages  
included Script Processor Module
  - **Enterprise:** unlimited  
included Script Processor Module





## NETxLAB® VOYAGER GLOBAL VISUALIZATION

visualization at the highest level

FROM YOUR HOME TO THE LARGEST HOTEL PROJECTS -



The newest product line of NETxAutomation also achieves the highest requirements, which professional system integrators expect from a visualization. So NETxAutomation establishes a new standard with this development.

The system consists of the **NETxLAB® Voyager Server**, to which you can connect almost unlimited **NETxLAB® Voyager Smart Clients** for visualization. With the included **Web Server**, you can access your visualization around the globe and interrogate states or make changes.

You now have the pleasant features of your visualization available worldwide. With full mobility and the variety of devices, the convenience for the user has been further improved. Since this system is based on the OPC standard, the well known functionality and convenience of the NETxKNX® OPC Server is full included.

Also the combination with the high end solution NETxLAB® Voyager OPC version is possible and favored to obtain also Alarms, Calendar, Eventor, Processor and Scenes, as the best solution for your project.

The necessary **NETxLAB® SmartVoyager Editor** for designing the visualization for the Voyager Server Clients is integrated and is free of charge.

Even larger office and hotel projects are configurable easily for the first time on mobile or web based devices.

A professional solution with individual design can be realized at a reasonable price.



- THE VOYAGER GLOBAL VISUALIZATION OFFERS A NEW DIMENSION IN THE WORLD OF KNX.





## NETxLAB® VOYAGER GLOBAL VISUALIZATION

### NETxLAB® Voyager Server

► **OPC server**

supports all well known functionalities of the NETxKNX® OPC Server

► **Web server**

has its integrated Web server for NETxLAB® WebVoyager Clients access

► **VNET protocol**

encrypted and fast VNET connection between server and clients

► **Central management**

administration, analysing and updating of all visualization clients

► **Visualization Editor**

configuring of the visualization projects by using the included  
NETxLAB® SmartVoyager Editor

► **Scalability**

flexible number of gateways and clients

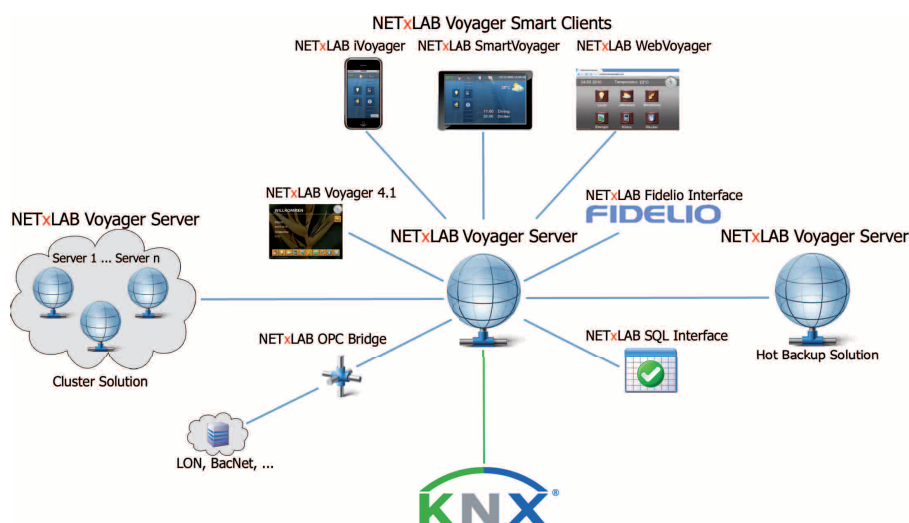
► **Redundancy**

permits coupling of 2 Voyager Servers for even more reliability

► **Clustering**

increased availability through networking of multiple Voyager Servers

**nearly unlimited integration is possible**





# NETxLAB® VOYAGER GLOBAL VISUALIZATION

## NETxLAB® Voyager Smart Clients

### ► NETxLAB® SmartVoyager

This client is designed for smaller touch panels, smart tablets and smartphones based on Windows CE or Windows Mobile.



### ► NETxLAB® iVoyager

The NETxLAB® iVoyager supports Apple platforms such as iPhone, iPad oder iPod Touch. It can be downloaded for free from the Apple App Store.



### ► NETxLAB® WebVoyager

It provides platform independent access to the visualization in order to manage your project via web. No additional installation is required, it requires only a browser to establish a password locked connection.



### supported Browsers



Apple Safari 4



Microsoft Internet Explorer 8



Opera 10



Google Chrome 4



Mozilla Firefox 3

### ► NETxLAB® SmartVoyager Editor

Every visualization project for all NETxLAB® Voyager Smart clients can be built with just one Editor - the NETxLAB® SmartVoyager Editor.

It offers highest user convenience by using Drag & Drop feature.

Libraries and templates are included and can be extended.

Create your own buttons by using the NETxLAB® Button Editor.

Supports per client 400 graphical elements on 20 pages.



## NETxLAB<sup>®</sup> VOYAGER GLOBAL VISUALIZATION

interfaces and expansion stages

### NETxLAB Voyager Server 1.0 Direct(KNX)

- ▶ for all KNX interfaces:

USB, RS232, EIBLib, NETIP Tunneling NETIP Routing

- ▶ **Starter:** 1 gateway / max. 1 Voyager Smart Client
- ▶ **Home:** 1 gateway / max. 5 Voyager Smart Clients
- ▶ **Basic:** 1 gateway / max. 10 Voyager Smart Clients

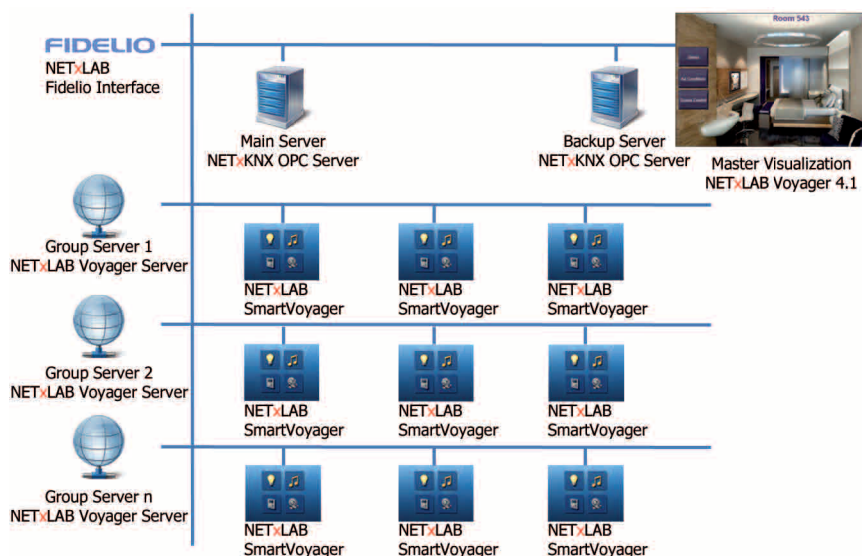
### NETxLAB Voyager Server 1.0 UnifiedDriver

- ▶ for all KNX IP Router and KNX IP interfaces:

ABB, b.a.b-tec (eibnode), Berker, Gira, Merten, Siemens, ...

- ▶ up to 1.000 IP gateways are supported
- ▶ active monitoring of physical devices
  - ▶ **Home:** 1 gateway / max. 5 Voyager Smart Clients
  - ▶ **Basic:** 3 gateways / max. 10 Voyager Smart Clients
  - ▶ **Professional:** 5 gateways / max. 20 Voyager Smart Clients
  - ▶ **Enterprise:** 20 gateways / max. 500 Voyager Smart Clients
- ▶ for larger projects a free configuration is possible

### Example of use for hotels or office complexes







# NETxLAB® SERVER INTERFACES

extensions for OPC Server and Voyager Server



NETxLAB® Fidelio/Opera Hotel System Interface



NETxLAB® Protel Hotel System Interface



NETxLAB® VingCard Door Access Interface



NETxLAB® Avaya IP Phone Server Interface



NETxLAB® WHD DAM 6000 MultiRoom Interface



NETxLAB® SQL Database Interface

## NETxLAB® OPC BRIDGE

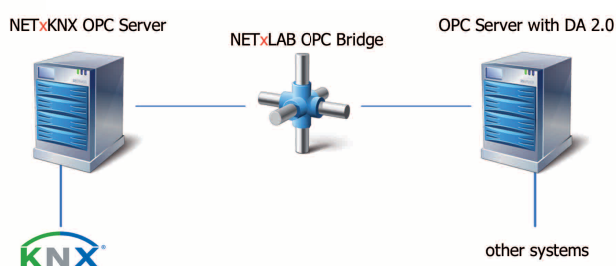
OPC data bridge

The NETxLAB® OPC Bridge enables, based on interface OPC Data Access 2.0, the connection between multiple OPC Servers. Therefore it represents a bridge between the world of KNX and other systems.

The bridge can connect up to 100 OPC server and guarantees a stable and secure connection between the defined data points. Systems like LON, SPS, BACKNET, PROFIBUS and other systems, can be integrated with it into the KNX system via OPC Server.

Thus you are in the realization of a project very free to decide which system is used.

► configuration example:



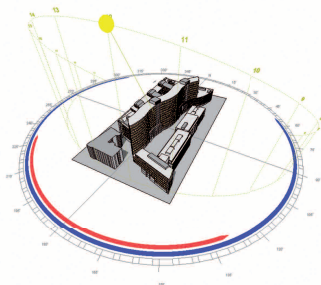
## NETxLAB® SHUTTER CONTROL SYSTEM

for automatic shading over KNX

Our NETxLAB® Shutter Control System is designed primarily for large office buildings with thousands of shutters. They can be managed centrally and visualized.

Once calculated, the data, from a 3D simulation of the annual course of the sun with considered shadow impact of surrounding buildings, is included.

- 3D simulation of the annual course of the sun - Project Frankfurter Welle



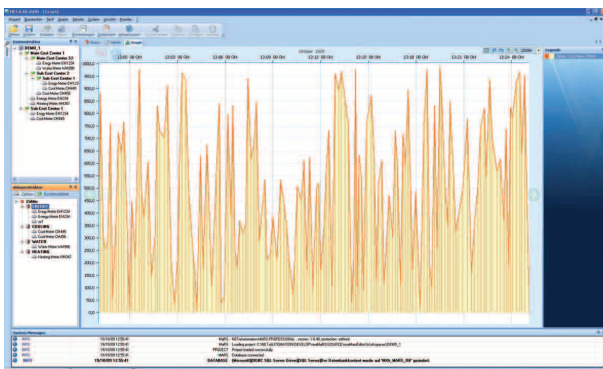
## NETxLAB® MARS

energy management system for your KNX plant

The **M**easurement and **R**eporting **S**ystem is a modern, user friendly system, with which the energy measured data, stored in a database system, can be displayed, analyzed and exported.

By measuring the energy efficiency in certain areas, it is possible to reduce the costs of energy sustainable.

- Issue of energy consumption in graph form:



# YOUR PROJECT - OUR EXPERIENCE

from family homes to major projects

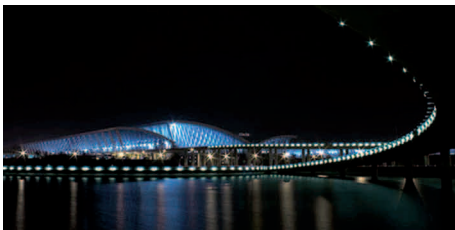
## Airports:



### ► Airport Beijing Terminal 3, China

Size: 100.000 data points, 2x200 gateways

Two NETxKNX® OPC Servers control the whole lightning, heating, ventilation and air conditioning.



### ► Airport Pudong Shanghai, China

Size: 30.000 data points, 2x20 gateways

Control of the whole lightning through two NETxKNX® OPC Servers.



### ► New Bangkok International Airport, Thailand

Size: 15.000 data points, 2x10 gateways

Control of about 60.000 lamps as well as heating, cooling and air conditioning via two NETxKNX® OPC Servers.

Visualization with the NETxLAB® Voyager.

## Hotels:

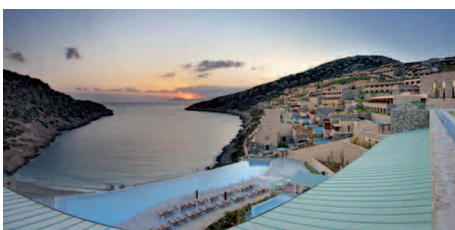


### ► The Yas Hotel (Formula 1 circuit) - Abu Dhabi, UAE

Size: 20.000 data points, 1x20 gateways

Control of the whole lightning through the NETxKNX® OPC Server.

Visualization of the hotel with the NETxLAB® Voyager.



### ► Gran Melia Resort & Luxury Villas Crete, Greece

Size: 15.000 data points, 1x32 gateways

The NETxKNX® OPC Server controls the whole lightning and the air condition.



### ► Qasr Al Sarab Resort - Abu Dhabi, UAE

Size: 20.000 data points, 1x32 gateways

Control of the lightning and air condition with the NETxKNX® OPC Server.

Visualization of the hotel with the NETxLAB® Voyager.



## YOUR PROJECT - OUR EXPERIENCE

more than 1000 realized projects

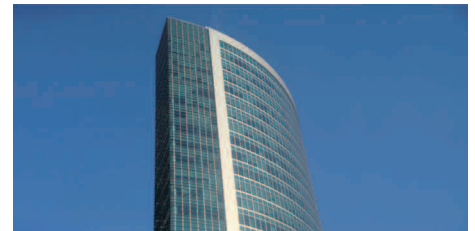
### Office blocks:

#### ► VTB Headquarters Moscow - Federation Tower, Russia

Size: 35.000 data points, 31x1 gateway

Control of the whole lightning and air condition through 31 NETxKNX® OPC Servers.

Winning project of the  Award International Europe 2010.

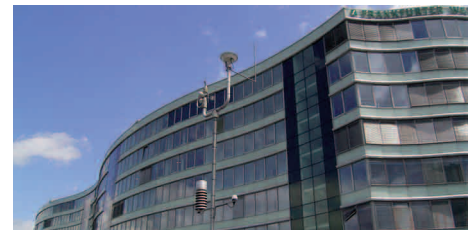


#### ► Frankfurter Welle, Germany

Size: 135.000 data points, 7x20 gateways

Control of the lightning via seven NETxKNX® OPC Servers.

Shading of about 4800 windows with shutters and 3D calculation of the annual course of the sun through NETxLAB® Shutter Control System.



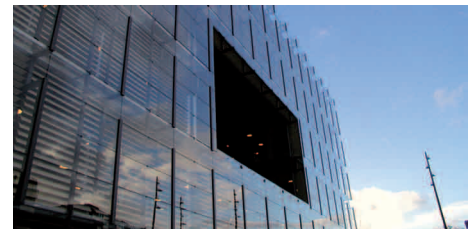
#### ► Deloitte Headquarters - Copenhagen, Denmark

Size: 5.000 data points, 2x5 gateways

Control of the lightning trough two NETxKNX® OPC Servers.

Control of heating/cooling with the NETxLAB® Heating/Cooling System.

Shading with 3D calculation of the annual course of the sun through the NETxLAB® Shutter Control System.



#### ► ZVK Wiesbaden, Germany

Size: 56.000 data points, 2x260 gateways

The whole lightning gets controlled with two NETxKNX® OPC Servers.

Visualization of the plant through NETxLAB® Voyager.

Automatic shading of 1420 shutter groups through the NETxLAB® Shutter Control System.



Our products have also been implemented in:

- Samsung Headquarters - Seoul, South Korea
- Mercedes Technologie Center - Daimler AG, Germany
- Abu Dhabi National Oil Company (ADNOC) - Headquarters , UAE
- Ciragan Palace Kempinski Istanbul, Turkey



Samsung Headquarters, South Korea

## YOUR SUCCESS IS OUR BUSINESS

Ongoing development and innovation of our products is ensured by intensive customer contact.

More than 1.000 completed projects give you the assurance that your project is successfully implemented.

We are happy to send you our price lists, personal offers and detailed product descriptions.

For your inquiries, please contact the team of NETxAutomation Software GmbH.

We look forward to hearing from you.

► **NETxAutomation Software GmbH**

Maria Theresia Strasse 41 / TOP 10

4600 Wels

Austria

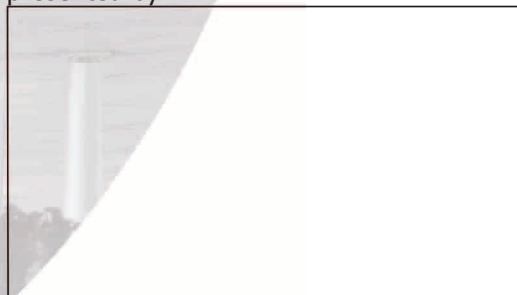
Tel.: +43 7242 252 900 0

Fax.: +43 7242 252 900 21

office@netxautomation.com

www.netxautomation.com

presented by:



Member of the KNX Association  
Member of the OPC Foundation

