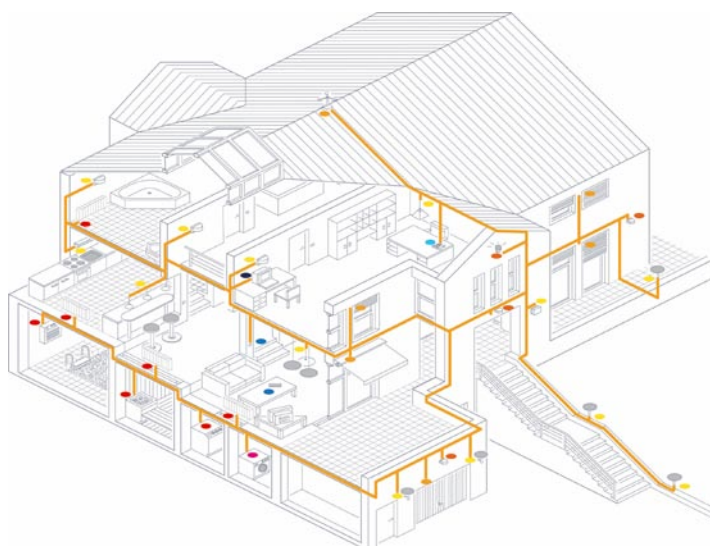
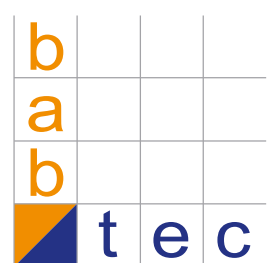


Catalogue 2009



eibPort
everywhere at home
 The easy way is the better way



b.a.b -technologie gmbh
Inhouse Dortmund
Rosemeyerstraße 14
44139 Dortmund

phone: +49 231 - 476 425 - 30

fax: +49 231 - 476 425 - 59

e-mail: info@bab-tec.de

internet: www.bab-tec.de

**The information in the catalogue refers to the
current production status of the hardware.
Modifications regarding to technology and
design are subjected to.**

**For all products our general conditions of sales,
delivery and payment are valid.**

**All prices are recommended retail prices in
euro without value-added-tax.**

Content

Hardware

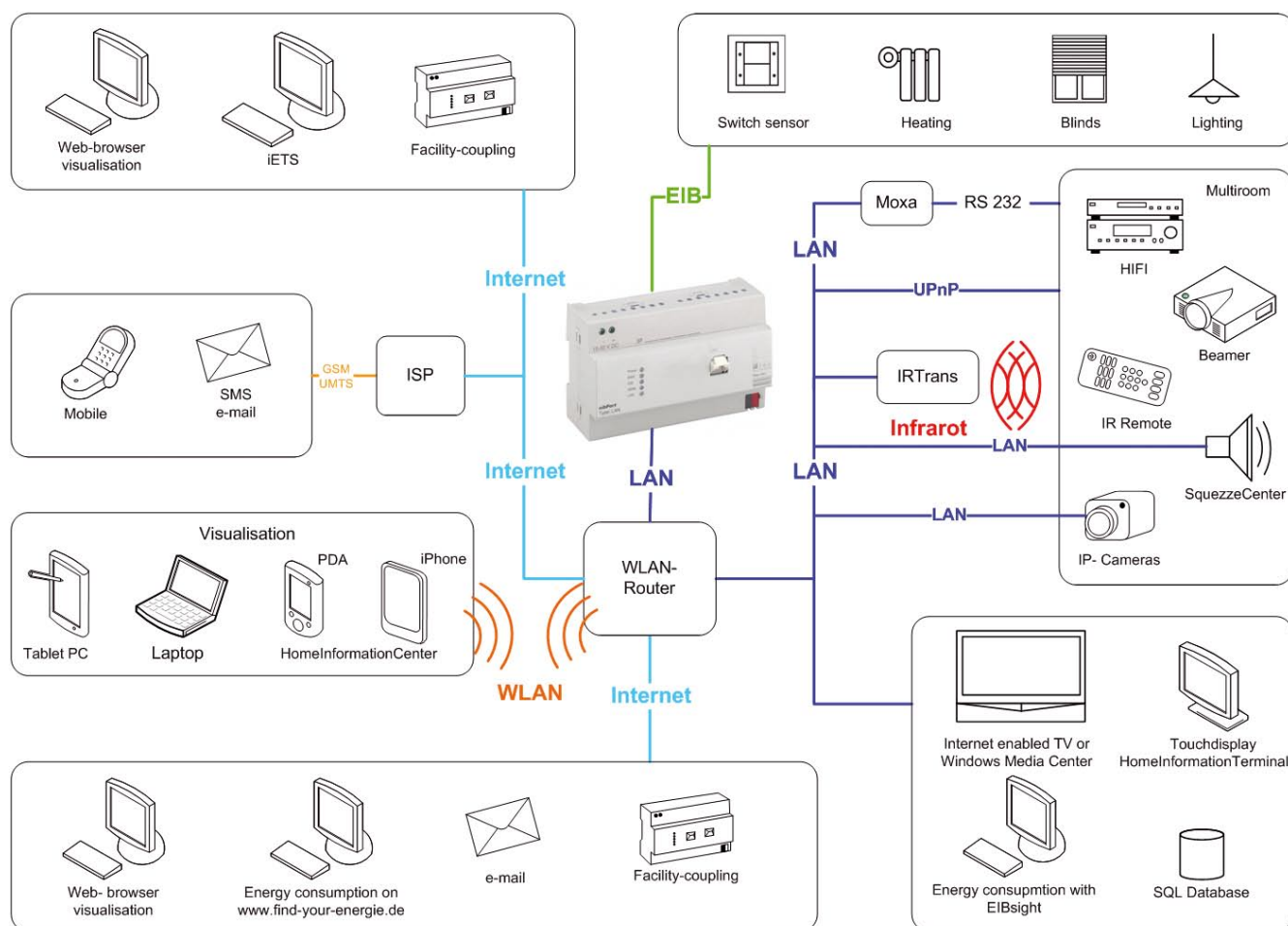
eibPort LAN	6
eibPort Powernet LAN	7
eibNode	9
Open Frame Panel PC10,4"	13
Open Frame Panel PC15"	14
Multimedia Panel DP 104-W	17
Multimedia Panel DP 150-W / DP 190-W	18
AP Touch Panel 15", 19"	19
Squeezebox 3 wireless	22
Synology Disk Station DS 107+	23
Synology Disk Station DS 207+	24
KNXeasy	26

Software

HomeInformationCenter MCE	28
HomeInformationCenter PDA	29
HomeInformationCenter Phone	30
eibDesk	32
DataWarehouse Single Version	33
DataWarehouse Full Version	34
DataWarehouse EIBSight	35
eibVision Single Version	36
eibVision Full Version	37
NETxEIB Open OPC Solution3	38

Accessory

Patchpanel für DIN-Schienenmontage	40
Switch für DIN-rail-mounted	41
Switch für DIN-rail-mounted Master	42
Switch für DIN-rail-mounted Slave	43
combirouter for für DIN-rail-mounted	44
SVR Akku	45
SVR electric power supply	46



Hardware

eibPort Ver. 2.1

The eibPort is a gateway connecting the EIB/KNX with the Ethernet world. By this Internet, Home Entertainment and EIB/KNX is integrated into one device. For example it is possible to power-on the beamer or to play the favorite playlist started by a switch-sensor on the wall.

Additionally the eibPort provides the visualization and the controlling of the whole electric installation. Setting up is easy and intuitive.

The access to the EIB/KNX- Bus happens on location or off site - per PC, Laptop, PDA, UMPC or mobile phone. Necessary is only a Standard Internet-Browser and Java (Java Script on mobile phones).

The integrated services allow automatism (timers, scenes, logics...) without starting the visualization. For surveillance, network cameras can be embedded into the visualization. Alerts (for example incidents, burglary ...) will be send as SMS or as E-Mail.

By the use of facility-coupling widespread properties can be merged together in one control centre (even when there are overlapping in groupaddresses).

The remote-programming of EIB/KNX- units via ETS is possible as well.

Attached into the distribution boards with a consumption of < 5W.

eibPort LAN Ver. 2.1

Gateway for linking LAN and EIB/KNX

- Integrated visualization
- Integrated services
- Web server
- Week time and annual time switch, special day switch
- Staircase-light function, time sender
- Logics, delay unit, threshold switch
- Light scene, comparator, Hysteresis switch, Multiplexer
- E-Mail, WAP-service, SMS via E-Mail
- Camera embedding, alert message processing
- Infrared-connection with IRTrans
- UDP-Telegram sender
- Connection with NTP-Server
- Multimedia-gating, RSS Feeds
- SQL-database logging
- iETS-Modus
- KNXnet/IP protocol connection (routing)
- Facility coupling
- Busmonitor and data recording
- Storage of 20.000 telegrams
- Address-state-table
- No datapoint limitation
- Multiuser visualization; no licence costs
- More Add Ons for data analysis, consumption-analysis
- iPhone and PDA service
- DIN rail mounting in accordance with DIN_EN 60715
- Interfaces: DC-IN (10-30 V), EIB/KNX bus terminal, RJ-45 (Ethernet) socket
- 64/64 MB RAM/ROM: up to 100 MBit/s in LAN
- Power consumption <5 W



Art.-No. 10103

Euro/piece without value added tax

1400,-

Hardware

eibPort Powernet LAN Ver. 2.1



Gateway for linking LAN and Powernet EIB/KNX

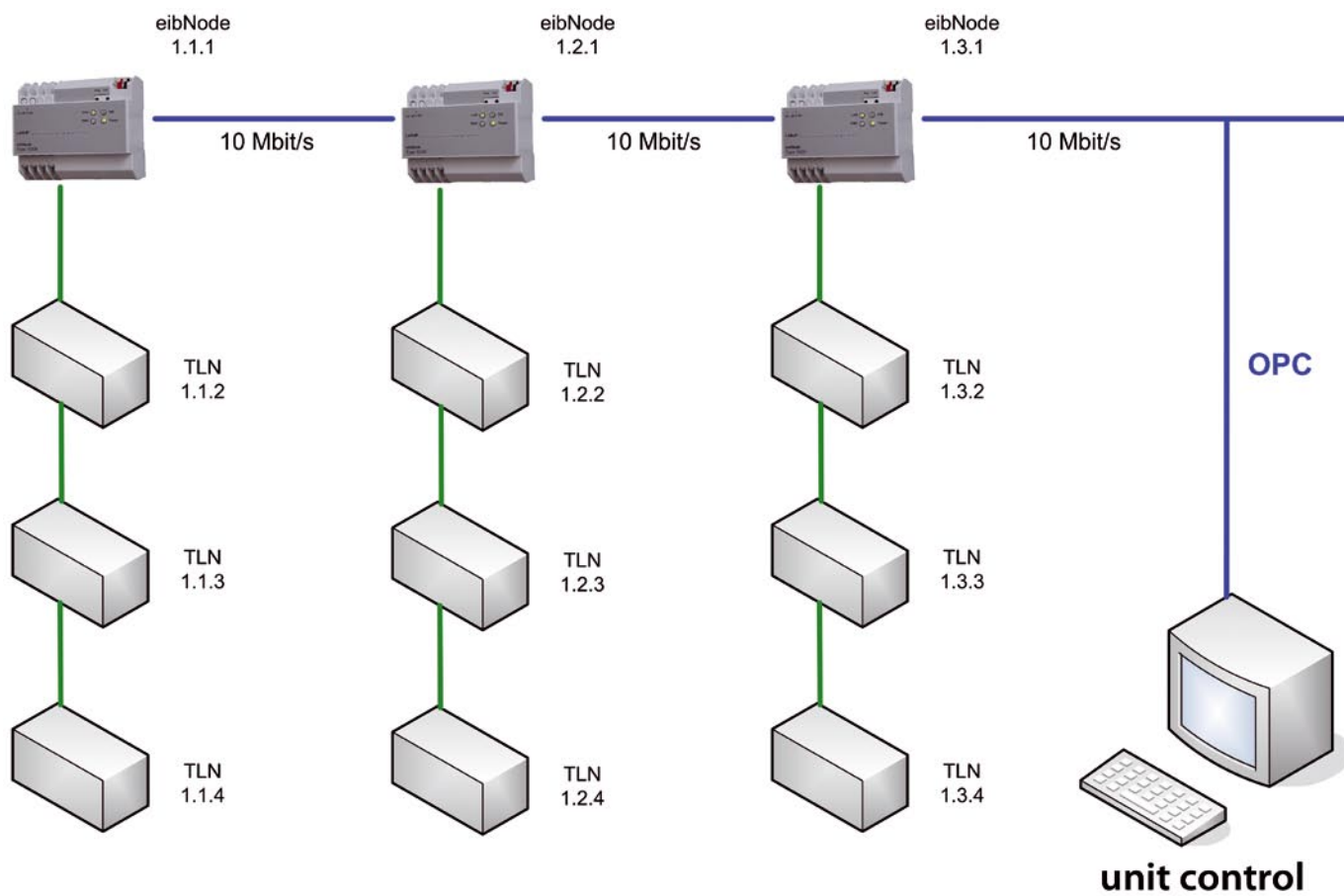
- Integrated visualization
- Integrated services
- Web server
- Week time and annual time switch, special day switch
- Staircase-light function, time sender
- Logics, delay unit, threshold switch
- Light scene, comparator, Hysteresis switch, Multiplexer
- E-Mail, WAP-service, SMS via E-Mail
- Camera embedding, alert message processing
- Infrared-connection with IRTrans
- UDP-Telegram sender
- Connection with NTP-Server
- Multimedia-gating, RSS Feeds
- SQL-database logging
- iETS-Modus
- KNXnet/IP protocol connection (routing)
- Facility coupling
- Busmonitor and data recording
- Storage of 20.000 telegrams
- Address-state-table
- No datapoint limitation
- Multiuser visualization; no licence costs
- More Add Ons for data analysis, consumption-analysis
- iPhone and PDA service
- DIN rail mounting in accordance with DIN_EN 60715
- Interfaces: DC-IN (10-30 V), AC-IN (230V) EIB, RJ-45 (Ethernet) socket
- 64/64 MB RAM/ROM: up to 100 MBit/s in LAN
- Power consumption < 5 W

Art.-No. 11103

Euro/piece without value added tax

1500,-

Hardware



Hardware

eibNode

Contrary to “ordinary” LAN-coupler eibNode is an intelligent junction between EIB/KNX and Ethernet. This gateway couples EIB-lines by Ethernet and offers extensively steering functions, which are also working without having started the visualization.

With a free graphic application, complex logical functions can be developed and simulated. After a successful test the modules will be permanently loaded into the eibNode.

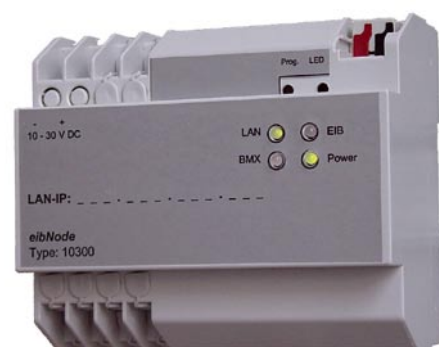
eibNode solves the conflict between decentral- and central- administrated intelligence.

With the help of several special functions the eibNode solves groupaddress overlapping which results from huge installations.

By the usage of connection to OPC the coupling to other visualization- and bus systems is uncomplicated possible.

Gateway for linking of EIB-lines via LAN

- Fast-Backbone; 10 Mbit/s
- Integrated controller with: binary logic, light scenes, staircase light function, delay unit, telegram transformer, tri stat gate, comparator, Hysteresis switch, periodic repeater, binary filter, mathematic functions, alert logic, Multiplexer, telegram and value counter, value storage, week time and annual time switch, time- and date sender, address initializing, presence simulation...
- All elements support different EIS-types functions and operations can be simulated with the free demo software eibVision
- UDP-/EIB filter table
- Ring buffer for the last 20.000 telegrams
- Keeping the state of all 32766 EIB addresses and 32768 virtual addresses steady.
- Connection to NETxEIB Open OPC-Server 3
- DIN rail mounting in accordance with DIN_EN 60715
- Interfaces: DC-IN (10-30 V), EIB/KNX bus terminal, RJ-45 (Ethernet) socket
- Power consumption <5 W



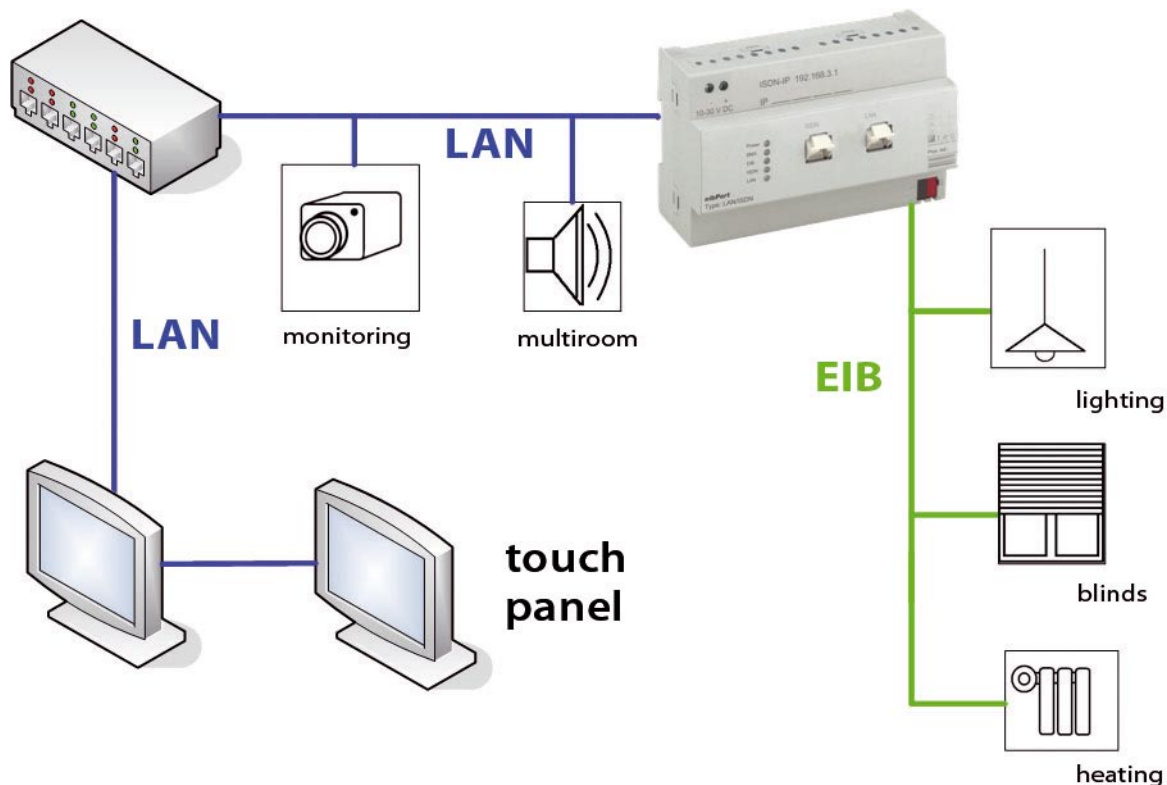
Art.-No. 10300

Euro/piece without value added tax

980,-

Hardware

Thin Clients



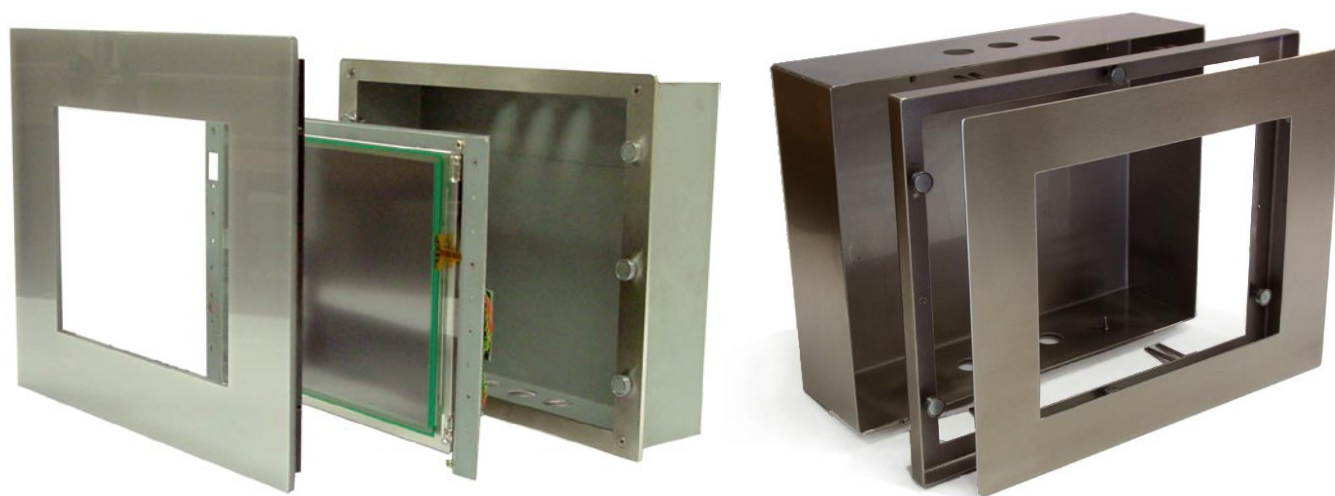
Visualization clients for eibPort

The Thin Client is characterized by low energy consumption and optimal mounting ability. An optional wall installation kit allows an uncomplicated installation into the wall. The Thin Client with preinstalled Linux (on 256 MB Flash Card) and Java VM are ready for operation. Optional available also with Windows XP Embedded (then Home Information Terminal is preinstalled).

In case of the Multimedia Panel there is a high performance computer available for in-wall mounting. It is able to stream videos and music, receive TV-programs (optional) and even connects the door intercom with sound and picture.

The on wall Panel is optically attractive by his marginal depth and offers an easy installation with the VESA wall fitting. An ideal information-point.

Thin Client



The Thin Client could be purchased in two different software versions:

Version A:

Linux preinstalled with Java aided (256 MB). After engaging the panel provides the browser and the Java VM.

Version B:

Windows XP Embedded on 2 GB Flash Card.

The Home Information Terminal (page 19) is preinstalled.

Charge: **200,- €**

Hardware

Thin Client 10,4"



Visualization client for eibPort

- Panel-PC with resistive touch surface
- 10,4" SVGA color TFT LCD
- Color 262K
- Useful screen area: 211,2 x 158,4 mm
- Resolution: 800x600
- Brightness: 150cd/m sq.
- Viewing angle: 15/35/45/45 Grad
- Contrast ratio: 250:1
- Embedded 3.5 CPU board
- Low Voltage CPU 533 MHz
- 512 MB SDRAM onboard
- 10/100 Base-T Ethernet Port Realtek 8100B
- 4x COM port (RS-232x3, RS-232/485x1)
- 1x Parallel port
- 1x FDD port
- 1x PS/2 Mouse & Keyboard port
- 1x Mic-in, 1x Line-in, Line-out
- 1x USB port
- 1x PC/104; 1x X-PCI
- 1x IDE: Pri./Sec.
- **Mounting kit for in wall installation: Acryl glass**
In-wall box (steel, galvanized)
Mounting frame (stainless steel)
Faceplate, acrylic silver
REG power supply 12 V DC (included in delivery)
Extra charge: **320,- €**
- **Mounting kit for flush mounting into walls: stainless steel**
In-wall box (stainless steel)
Mounting frame (stainless steel)
Faceplate, stainless steel
REG power supply 12 V DC (included in delivery)
Extra charge: **400,- €**

Art.-No. 04310

Euro/piece without value added tax

1490,-

Thin Client 15"

Visualization client for eibPort

- Panel-PC with resistive touch surface
- 15" XVGA LVDS
- Color 262K
- Useful screen area: 304,1 x 228,1 mm
- Resolution 1024 x 768
- Backlight: CCFLx2
- Perspective: 120/100 Grad
- Contrast ratio: 400:1
- Embedded 3.5 CPU board
- Low Voltage CPU 533 MHz
- 512 MB SDRAM onboard
- 10/100 Base-T Ethernet Port Realtek 8100B
- 4x COM port (RS-232x3, RS-232/485x1)
- 1x parallel port
- 1x FDD port
- 1x PS/2 mouse & keyboard port
- Mic-in, Line-in, Line-out
- 1 x USB port
- 1 x PC/104; 1 x X-PCI
- 1 x IDE: Pri. / Sec.
- **Mounting Kit for in-wall installation**
 - In-wall box (steel, galvanized)
 - Mounting frame (stainless steel)
 - Faceplate, acrylic silver
 - REG power supply 12 V DC (included in delivery)
 - Extra charge: **370,- €**
- **Mounting kit for flush mounting into walls: stainless steel**
 - In-wall box (stainless steel)
 - Mounting frame (stainless steel)
 - Faceplate, stainless steel
 - REG power supply 12 V DC (included in delivery)
 - Extra charge: **450,- €**



Art.-No. 04315

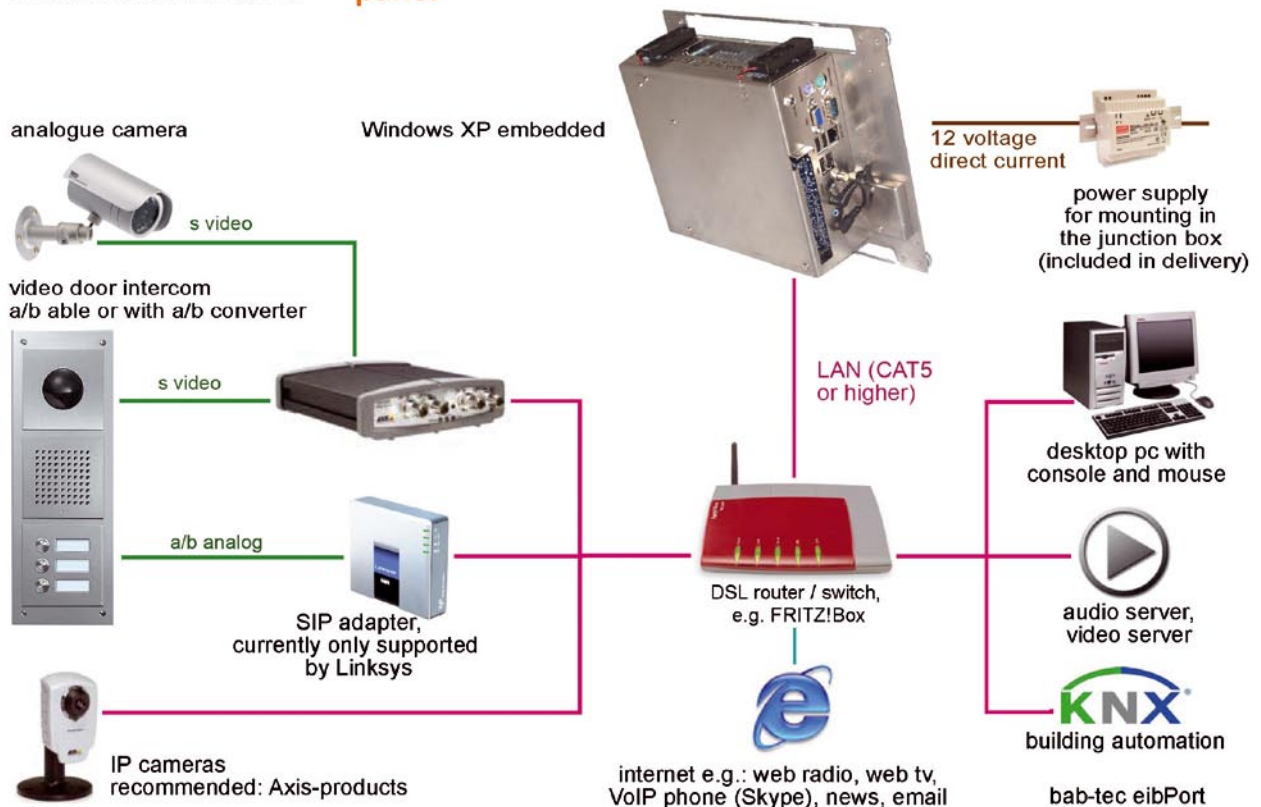
Euro/piece without value added tax

1640,-

Hardware

Multimedia Panel PC`s

Installation scheme panel



Building automation and video intercom combined

High quality hardware

- Stainless steel body with built-in speakers and microphone.
- Fanless low temperature technology: no risk of a fan failure, no danger of overheating
- High performance electronics of industrial standards

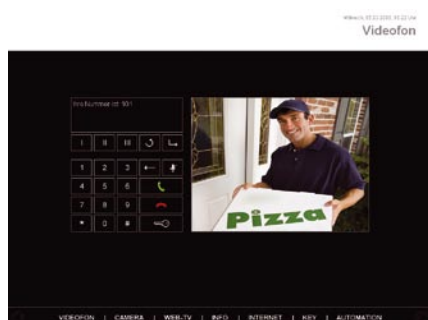
Innovative design

- Clip-on frames to fit individually to the interior design
- Large variety of standard frames: piano-black, white, brushed aluminum, stainless steel, glass
- Custom-made frames to your wishes, e.g. exotic woods

Various Software Options

- Windows XP embedded with NET-Framework for installation of additional applications
- Write protection for recovery of your settings in case of data loss or a faulty operation
- Complete video intercom software; visualization of audio and video server plus
- KNX software via java enabled web browser with eibPort

Multimedia Panel PC's



Integrative User Interface with Navigation

Windows XP embedded, applications can be installed

Integrated interface with navigation buttons to select further functions.

Powerful Video Intercom

Echo-free simultaneous speaking

Hook-up of 3 door stations by default, more optional at extra cost

Applicable with any usual analog/digital-enabled door station, or with an analog/digital adapter, e.g. Elcom, Siedle, Ritto.

Visualization of EIB/KNX-Software

Do the controlling and the visualization of any building automation system with a java compatible web browser and from eibPort. Called up directly from the user interface with the Button "House automation".

Access to audio- and video server

Do the controlling and the visualization of multiroom-audio-systems and video-applications, which have a web browser-Interface.

Excellent Display of Video cameras

Operation of IP cameras or analog cameras with video server

By default hook-up of up to 4 or 8 cameras (10,4" or 15"), more optional

Camera displays with preview and full-size view.

Hardware

Multimedia Panel DP 104-W



Visualization client for eibPort

- Panel-PC with resistive touch surface
- 10,4" TFT-Color-LCD
- Resolution: 800x600
- CPU VIA C7 1200MHz; cooling: fan less (convection)
- Memory: 2GB Flash Card
- RAM: DDR2 533 1GB
- Power consumption: 14-25 watt
- Graphic board: integrated with Hardware-MPEG-2 acceleration
- Surround-Sound Dolby-Digital EX
- PCI-Slot: for example for DVB-T/C/S
- 2x PS/2 port (mouse & keyboard)
- 1x RJ-45 LAN, 1 Gigabit
- 1x VGA port; 1x S-Video; 1x SPDIF or TV-out
- 1x USB port; 1x COM port
- Line-out, line-in, mic-in (horizontal, Smart 5.1)
- 2x 1 watt wideband-loudspeaker
- Microphone
- Embedded Videophone
- Multimedia-Software can be connected
- REG power supply 12V DC (included in delivery)
- **In wall box for mounting in (223x265x77mm)**
Extra charge: **80,- €**
- **Stainless steel frame, aluminum,**
Extra charge: **80,- €**
- **Glass frame (black, white, green)**
Extra charge: **120,- €**

Art.-No. 04511

Euro/piece without value added tax

2500,-

Multimedia Panel DP 150-W, 190-W

Visualization client for eibPort

- Panel-PC with resistive touch surface
- 15" TFT-Color-LCD/ 19" TFT-Color-LCD
- Resolution: 1024x768 / 1400x900 (16:9)
- CPU VIA C7 1200MHz; cooling: fan less (convection)
- Memory: 2GB Flash Card
- RAM: DDR2 533 1GB
- Power consumption: 35 watt / 50 watt
- Graphic board: integrated with Hardware-MPEG-2 acceleration
- Surround-Sound Dolby-Digital EX
- PCI-Slot: for example for DVB-T/C/S
- 2x PS/2 port (mouse & keyboard)
- 1x RJ-45 LAN, 1 Gigabit
- 1x VGA port; 1x S-Video; 1x SPDIF or TV-out
- 1x USB port; 1x COM port
- Line-out, line-in, mic-in (horizontal, Smart 5.1)
- 2x 1watt wideband-loudspeaker
- Microphone
- Embedded Videophone
- Multimedia-Software can be connected
- REG power supply 12V DC (included in delivery)
- Optional with TV-card (special version)
- **In-wall box for mounting** (292x365x75mm)
respectively (318x468x85mm)
Extra charge: **90,- € / 100,- €**
- **Stainless steel frame, aluminum**
Extra charge: **90,- € / 120,- €**
- **Glass frame (black, white, green)**
Extra charge: **130,- € / 166,- €**



15"	Art.-No. 04515	Euro/piece	without value added tax	2850,-
19"	Art.-No. 04519	Euro/piece	without value added tax	3249,-

Hardware

AP Touch Panel PC 15", 19"



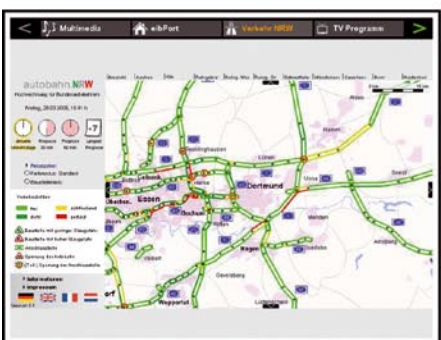
multimedia



visualization



news



traffic

The HomeInformationTerminal (HIT) is the information center of your home. Here you can use your Home automation system and control your multi-room audio system. It is possible to integrate links to webpage or camera-streams. All this is accessible through a high quality graphical user interface with good ease of use.

No matter if you use a touch display, a laptop or an ultra mobile PC (UMPC) on the sofa in every case you have a quick survey of all the information you need.

Using the technology of the installed internet browser, all websites based on modern web-technologies like Flash, JavaScript, Ajax etc. can be integrated. The eibPort visualization as well as our multimedia solution is integrated natively. This means you have no delay or refresh time when switching between different pages.

In the HomeInformationTerminal you keep the liberties of your internet browser. With an on-screen keyboard HIT is able to browse custom internet pages which have not been preconfigured.

You can create simple menu items or submenus for the navigation bar. Every item can be customized in the look and assigned to many functions. It is possible to create your own and individual information central.

AP Touch Panel PC 15", 19"

Visualization client for eibPort

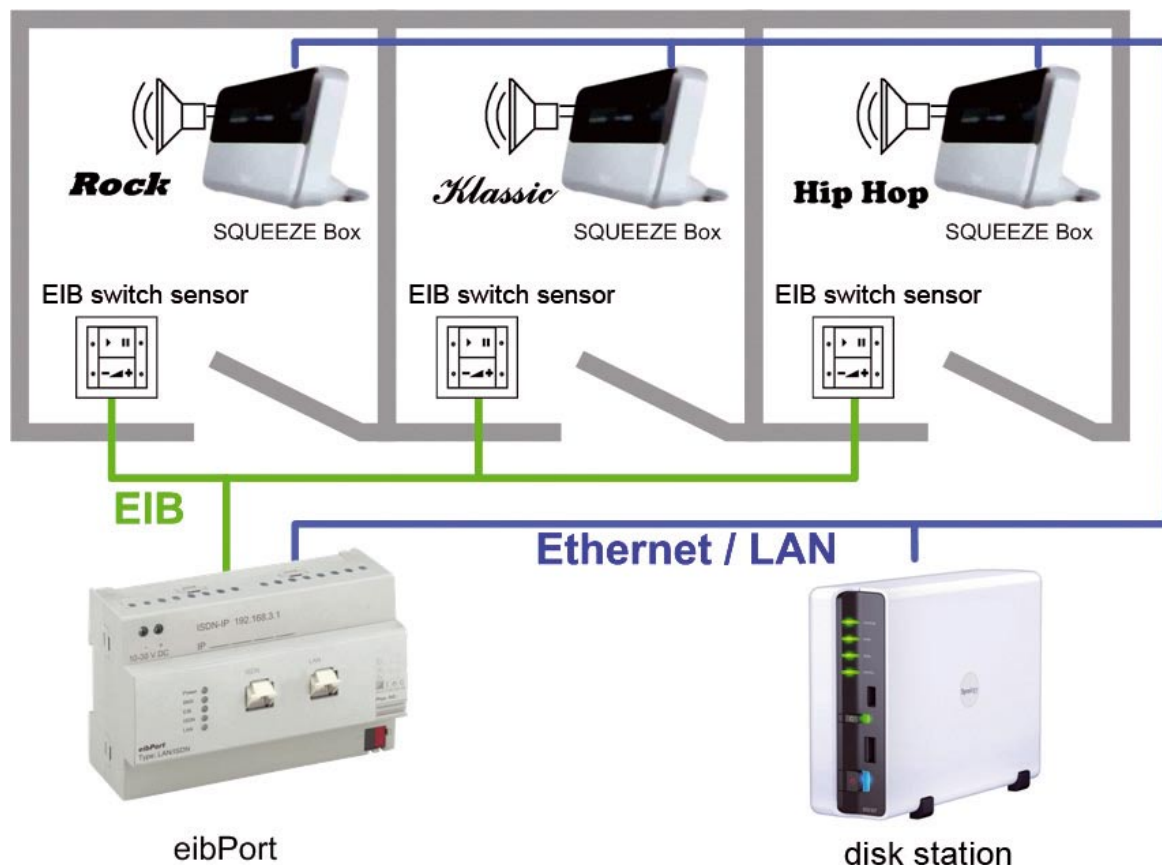
- Flat Panel-PC with resistive touch surface
- Color TFT LCD
- Intel Celeron 1G fanless
- Dimensions BxHxT: 386x308x60mm(15") / 449x374x60 mm(19")
- Resolution 1024x768 (15") / 1280x1024(19")
- Brightness: 350 cd/m2
- XP embedded at 4 GB FC pre-installed
- 512 MB DDRAM onboard
- 1x RJ-45 10/100 Base-T Ethernet Port
- 4x COM port (RS-232x3, RS-232/485x1)
- 1x Parallel port
- 1x 2.5" HDD bay
- 1x PS/2 Mouse & Keyboard port
- 1x Mic-in, 1xSpeaker Out
- 4x USB port
- 1x PCI express; 1 x mini-PCI
- 2x 3W Speaker
- Power supply 12V DC (included in delivery)
- Fitting: 100x100mm VESA Standard
- Front: stainless steel
- Only 6cm depth (without wall fitting)
- Home Information Terminal preinstalled



15"	Art.-No. 04625	Euro/piece	without value added tax	1780,-
19"	Art.-No. 04629	Euro/piece	without value added tax	1980,-

Hardware

Squeezebox



The Squeezebox of Logitech is a high quality Network-Audio-Player which receives music streams from network. It passes it to hi-fi systems or active-speakers (for example PC loudspeakers). The connection with the local network takes place via WLAN (receiver and antenna are integrated into the device) or by network cable. By EIB switch sensor the music can be chosen and the device can be controlled. The current title-, interpret- and album-information can be shown on EIS 15 compatible EIB-Displays (together with eibPort). Due to the Squeezebox you can listen to the complete local stored music-compilation and internet-radio stations in every room of your house. Doing this several Squeezebox devices can play different titles at the same time. Additionally it can be used as an IR-interface and a text display for short messages.

The Disk Station is provided with preinstalled SqueezeCenter, XPLHub, and MySQL database. It is an ideal comprehensive solution for the Squeezebox and the SqueezeCenter.

Squeezebox 3 wireless black

Streaming-Client für Squeezecenter (Open Source Server Software for Windows, MAC OS and Linux/Unix)

- 54 Mbit/s WLAN Module integrated (802.11g)
- RJ-45 Ethernet interface (100 Mbit/s)
- WLAN encryption: WPA Personal, WPA-PSK, WPA2-PSK, WPA2-AES and 64/128 bit WEP
- Stereo-Cinch output, optical and coaxial digital output, loudspeaker output
- Supported formats: MP3, AAC, OGG, MP2, MusePack, WMA, FLAC, Apple Lossless, WMA Lossless, AIFF, WAV, PCM
- Internet radio
- Size: 192x93x80mm (incl. pedestal)
- Display: 320x32 Pixel, grey scale, background light
- Included in delivery: Squeezebox 3 classic, power supply, manual, software, IR-remote control in device color (incl. batteries), 2 m Cinch-cable
- included in delivery: Squeezebox 3 Receiver, power supply, manual, 2 m Cinch-cable



SQB 3 classic	Art.-No. 04515	Euro/piece	without value added tax	205,-
SQB 3 Receiver	Art.-No. 04519	Euro/piece	without value added tax	135,-

Hardware

Synology Disk Station DS109



NAS (Network Attached Storage) drive; hard disk with network connection, e.g.: for providing the music data for Squeezebox devices

- CPU Clock Rate: 1.2GHz
- Memory: 128MB
- Internal HDD1: 3.5" SATA(II) X1
- External HDD Interface: USB 2.0 port X3, eSATA port X1
- Size: 160mm X 218mm X 63mm
- LAN: Gigabit X1
- Max Capacity (Internal HDD): Up to 2TB
- Weight: 0.81kg
- Power Recovery
- Backup Solutions
- Network protocols: CIFS, AFP (3.1), FTP, NFS, Telnet/SSH
- Applications: Surveillance Station 2, Photo Station 3, File Station 2, Audio Station, Web Station, PHP/MySQL, Download Station 2, iTunes Server
- Audio: AAC, FLAC, M4A, MP3, Ogg Vorbis, WAV, WMA, WMA PRO, WMA Lossless, MP3, M4A, M4P, AIF,, FLAC, WMA VBR (Playlist) M3U, WPL (Internet Radio) SHOUT-cast, Radioio
- Video: ASF, AVI, DAT, DivX, MP4, MPEG1, MPEG2, MPEG4, VOB, WMV, XviD, FLV, MPEG2, RM, RMVB
- Power supply: 100-240V AC (50-60Hz)
- **Preinstalled:** SqueezeCenter, XPLHub and MySQL database to use Squeezebox immediately
- Extra charge: 50 €
- Extra charge for installing HDD: at the current daily price

Art.-Nr. 35220

price on request

Synology Disk Station DS209

NAS (Network Attached Storage) drive; hard disk with network connection, e.g.: for providing the music data for Squeezebox devices

- CPU Clock Rate: 1.2GHz
- Memory: 256MB
- Internal HDD1: 3.5" SATA(II) X2
- External HDD Interface: USB 2.0 port X3
- Max Capacity (Internal HDD): Up to 4TB
- Weight: 0.98kg LAN: Gigabit X1
- File System: EXT3; FAT (External Disk Only); NTFS (External Disk Read Only)
- Supported Clients: Windows 2000 onward; Mac OS X 10.3 onward; Linux
- Power Recovery
- Backup solutions
- Network protocols: CIFS, AFP (3.1), FTP, NFS, Telnet/SSH
- Application: Surveillance Station 2, Photo Station 3, File Station 2, Audio Station, Web Station, PHP/MySQL, Download Station 2, iTunes Server
- **Audio:** AAC, FLAC, M4A, MP3, Ogg Vorbis, WAV, WMA, WMA PRO, WMA Lossless, M4P, WAV, AIF,, FLAC, WMA VBR (Playlist) M3U, WPL (Internet Radio) SHOUTcast
- **Video:** ASF, AVI, DAT, DivX, MP4, MPEG1, MPEG2, MPEG4, VOB, WMV, XviD, WMV, FLV, RM, RMVB,
- Power supply: 100 - 240V AC (50-60Hz)
- Size: 160mm X 218mm X 88mm
- **Preinstalled:** SqueezeCenter, XPLHub and MySQL database to use Squeezebox immediately
- Extra charge: **50 €**
- extra charge for installing HDD: **at the current daily price**

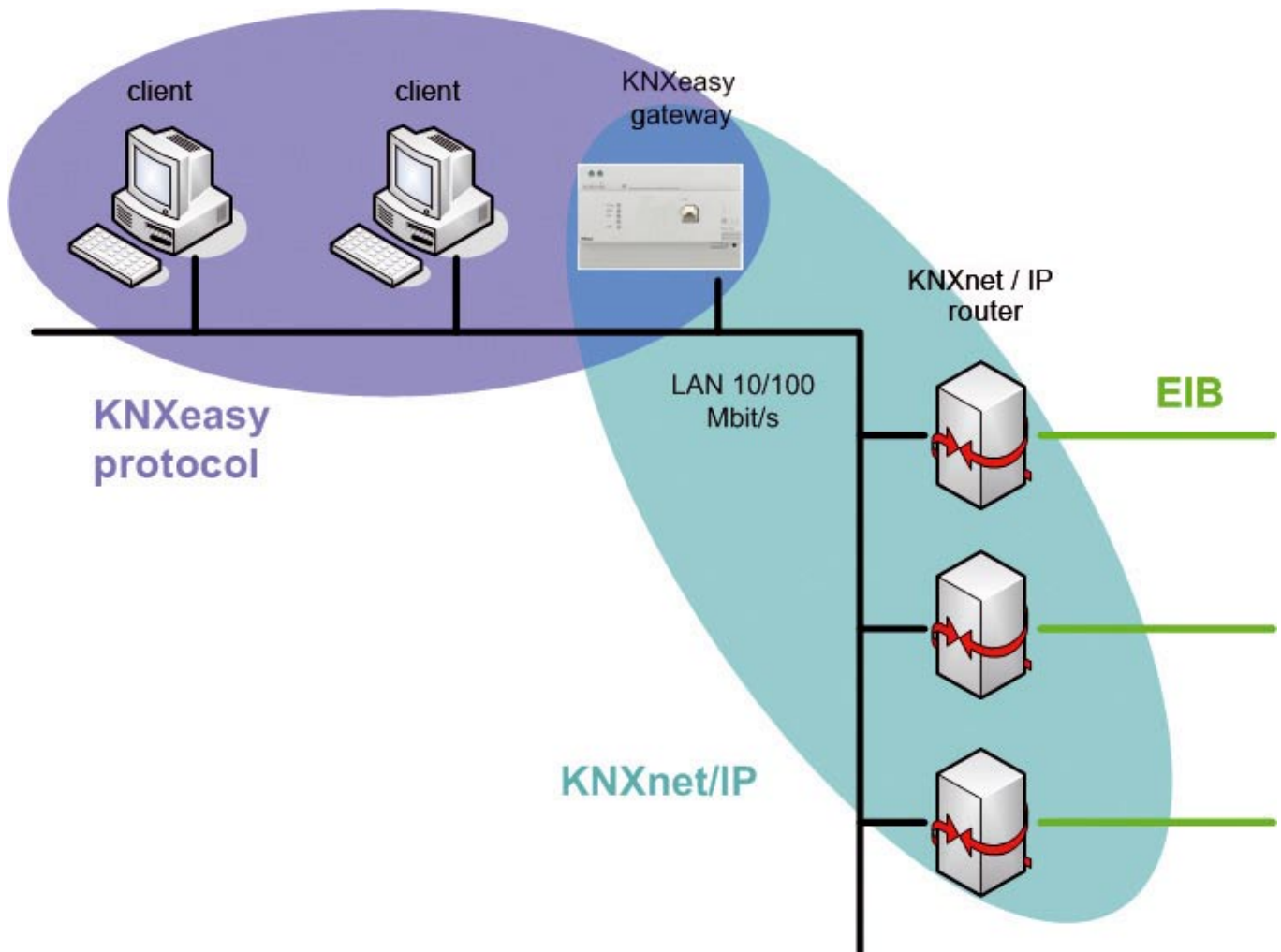


Art.-No. 35225

price on request

Hardware

KNXeasy



The Gateway KNXeasy translates the KNXnet/IP-Protokoll into simple ASCII Code (KNXeasy) (bi-directional).

Thereby Software for EIB-connection can be developed without being dependant on the KNXnet/IP Protocol.

In order to configure the Gateway for your EIB-installation, data can be exported from ETS and prepared for KNXeasy.

Also writing of the EIB/KNX-data into a MySQL-data base is possible.

KNXeasy

ASCII-Gateway for KNXnet/IP

- Conversion of KNXnet/IP-Protocol into an easy ASCII-Code (KNXeasy-Protocol) and backwards.
- KNXeasy-Protocol containing EIS-Types, values and addresses in readable format
- Easy data transfer from the ETS (ESF-file)
- Groupaddresses, Values and Timestamps are written into a MySQL Database
- REG-box (for mounting in distribution boards)
- Connections: DC-IN (10-30V), RJ-45 (Ethernet)
- 10 Mbit/s

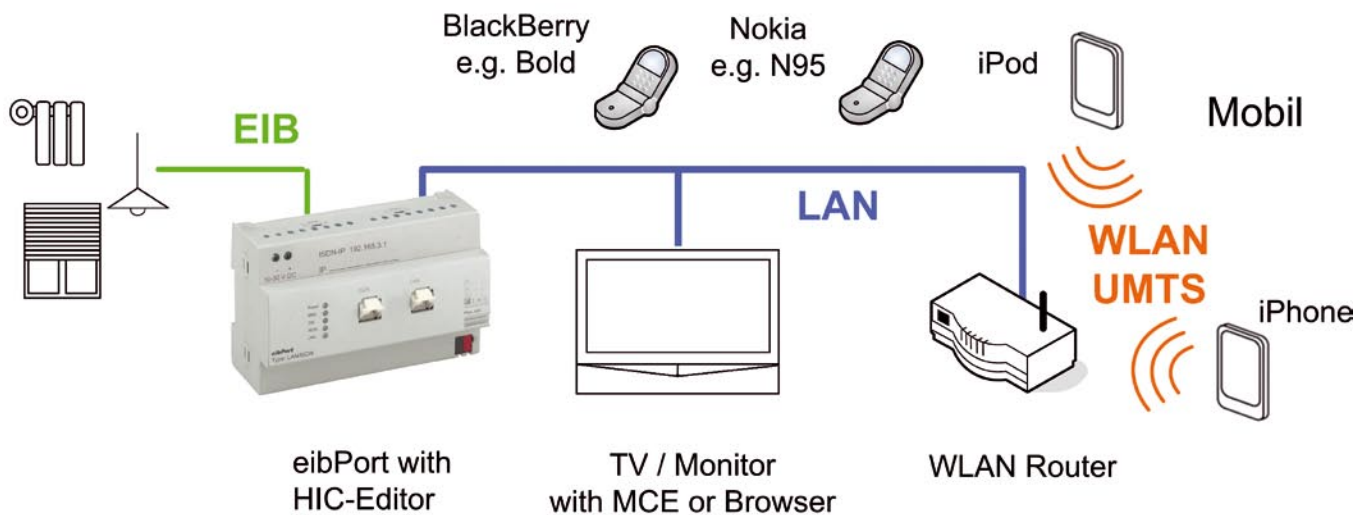


Excerpt from the KNXeasy protocol:

Protokoll	SystemID	Command	Address	Value
KNXnet/IP	0	write	1/0/1	EIS_1 on

Euro/piece without value added tax **590,-**

Software



With intelligent software you can once more enlarge the power spectrum of our gateways. Our Software-solutions offer you the chance for connecting the iPhone/iPods or PDAs and compatible mobile phone but as well connecting the television to the home automation. By this you can integrate devices of the communication- and consumer electronics into visualization and into the handling of the KNX-System.

Software for recording and analyzing of consumption data - according to different requirements - is available. By this you can easily store telegrams (consumption data) of the eibPort (and thereby from the whole KNX/EIB-world) and additional analyze them on demand.

Last but not least we offer the classic PC-single user visualization under MS-Windows.

HomeInformationCenter MCE

Visualization of the eibPort for Windows Media Center

Functions:

- Camera:
Shows picture of a network camera.
- EIS1:
switching- or status- information.
- EIS5 temperature:
Current value- and set point- value display and controlling.
- EIS6 value:
0 - 100 %
- EIS14 value:
1 Byte
- Blind:
Move/ Step
- Media Control:
Title information with Play, Stop, Skip, Back, louder, lower



Art.-No. 20500

Euro/piece without value added tax

49,-

Software

HomeInformationCenter PDA

Visualization of the eibPort for your PDA

Functions:



- Camera:
Shows picture of a network camera.
- EIS1:
switching- or status- information.
- EIS5 temperature:
Current value- and set point- value display and controlling.
- EIS6 value:
0 - 100 %
- EIS14 value:
1 Byte
- Blind:
Move/ Step
- Media Control:
Title information with Play, Stop, Skip, Back, louder, lower

Art.-No. 20510

Euro/piece without value added tax

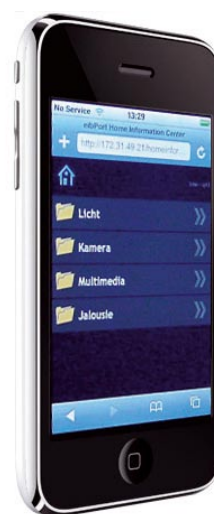
49,-

HomeInformationCenter Phone

Visualization of the eibPort for iPhone/iPod or e.g.: Nokia N95, BlackBerry Bold, HTC Diamond

Functions:

- Camera:
Shows picture of a network camera.
- EIS1:
switching- or status- information.
- EIS5 temperature:
Current value- and set point- value display and controlling.
- EIS6 value:
0 - 100 %
- EIS14 value:
1 Byte
- Blind:
Move/ Step
- Media Control:
Title information with Play, Stop, Skip, Back, louder, lower



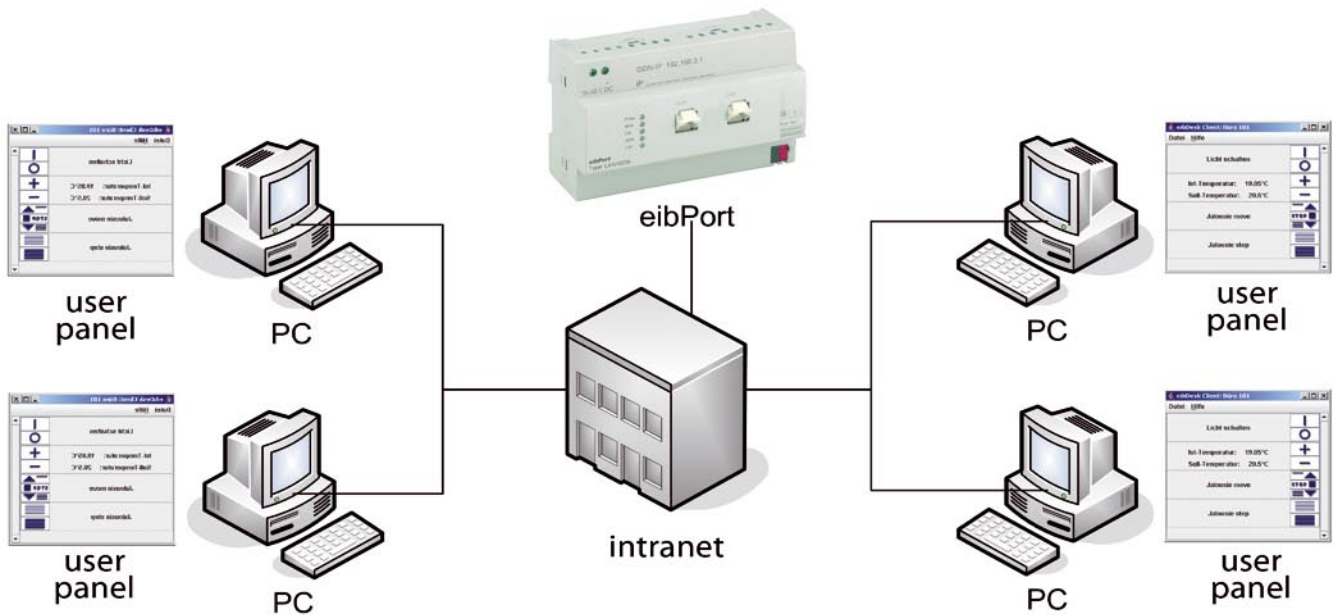
Art.-No. 20520

Euro/piece without value added tax

49,-

Software

eibDesk



eibDesk – room control with comfort and energy saving potential

eibDesk is a Server-Client application for eibPort. The Software allows local handling of the EIB-components directly from PC; up to 250 workstation- visualizations can be projected per eibPort. (250 PC-switch sensors)

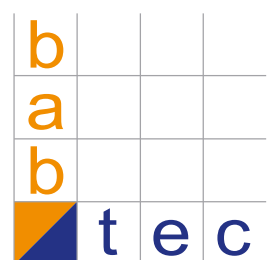
eibDesk offers the user a comfortable controlling of lighting, blind and room- temperature and allows an efficient work under individual conditions. For the building carrier the saving potential is to reduce costs for room controlling elements like switch sensors.

In opposite to other software solutions there are no other project data than the Client-application on the office-PCs. All data are managed central in the eibPort.

Multifunction switch sensor (mss)

Due to the graphic interface creating a mss is very simple. The possibility to import the ETS data simplifies the address allocation additionally. Quick reaction regarding to modifications of the building are possible without additional costs (-instead of new control elements and cabling).

The access to mms is protected by username and password.



Software

eibDesk

Add On for eibPort

- Creating of PC-switch sensors
- Library with switcher, dimmer, blind switching, and room temperature controllers.
- Up to 250 PCs can get access to one eibPort.
- Communication via LAN
- All project data are hosted in the eibPort.
- Start via Tray Icon



Art.-N0. 20300

Euro/piece without value added tax

480,-

Software

DataWarehouse Single Version



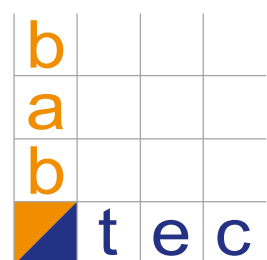
eibPort DataWarehouse Client Software for MS-Windows XP

- Data acquisition fully automated
- Cyclic storage of data (up to 5000 telegrams per day) in a access database
- Import of ETS-database
- Further editing of stored data in MS-Excel© possible
- Server definitions and parameterization of one (1 piece) eibPort / eibNode

Art.-No. 20400

Euro/piece without value added tax

168,-



DataWarehouse Full Version

eibPort DataWarehouse Client Software for MS-Windows XP

- Data acquisition fully automated
- Cyclic storage of data (up to 5000 telegrams per day) in a access database
- Import of ETS-database
- Further editing of stored data in MS-Excel© possible
- Server definitions and parameterization of ten (10 pieces) eibPort / eibNode



Art.-No. 20410

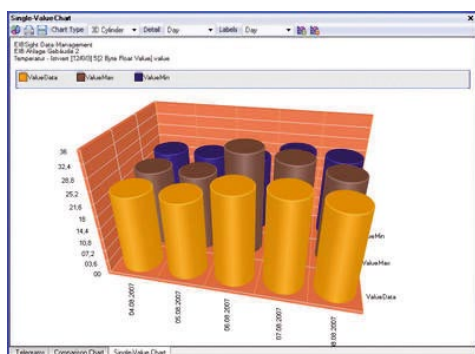
Euro/piece without value added tax

468,-

Software

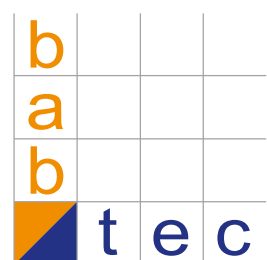
DataWarehouse eibSight

Long term data-analysis and diagram recording for eibPort



- Distributed by the producer knappmedia, Bad Honnef
- Further information: www.knappmedien.de

Price on request



KNXVision Single Version

Visualization software for eibNode

- Preconfigured display- and switch modules.
- Fault processing and -forwarding.
- Weekly-, annual- and special day-clocks
- Line writer (graph) and value assumption for MS Excel©
- Complex logic modules
- Telegram recording and -analysis
- ETS - groupaddress import, E-Mail, SMS-mailing
- Executable under Windows© NT4.0 SP6, 2K, XP and from Pentium III, min. 64 MB RAM
- 100 MB hard disk space necessary
- Single-user licence; delivery on CD incl. Dongle



Art.-No. 20110

Euro/piece without value added tax

700,-

Software

KNXVision Full Version

Visualization software for eibNode



- Preconfigured display- and switch modules.
- Fault processing and –forwarding.
- Weekly-, annual- and special day-clocks
- Line writer (graph) and value assumption for MS Excel©
- Complex logic modules
- Telegram recording and -analysis
- ETS - groupaddress import, E-Mail, SMS-mailing
- Executable under Windows© NT4.0 SP6, 2K, XP and from Pentium III, min. 64 MB RAM
- 100 MB hard disk space necessary
- Multi-user licence; delivery on CD incl. Dongle

Art.-No. 20100

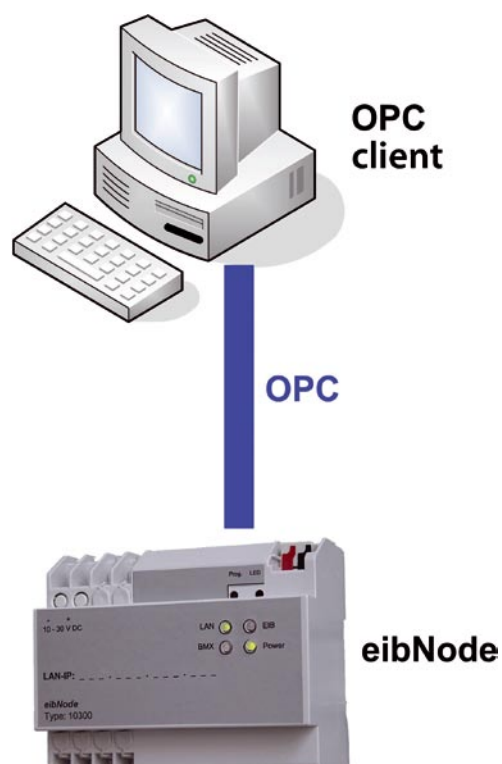
Euro/piece without value added tax

1400,-

NETxEIB Open OPC Solution3

This Server offers the OPC DA interface for eibPort/eibNode

- Distributed by developer NETxAutomation, Austria
- Further information at: www.netxautomation.com



Price on request

Accessory

REG components



Installation in conventional electrical distribution boxes or compact distribution boxes omits the data cabinets. The often needed additional devices can be embedded centrally and safely with an optimal optical impression.

Therefore the requirements in the structural cabling according to EN 50 173-1 are fulfilled. Active as well as passive components only need to be installed without any additional programming or setting of parameters - the perfect complement to eibPort and eibNode.

An additional rack or loose wiring are not preferable or necessary.

Advantages:

- Structured, standard conform solution
- Solution for DIN-rail-mounting according to Isolation class II
- Use in conventional installation surroundings
- Easy installation and commissioning
- Expandable on demand
- Compatible with present and future solutions.

Patch panel for DIN rail montage

Full screened Patch panel Category 5e, Class D

- 6 divisional- unit (1 TE - 18mm)
- 6 x RJ-45 jack
- Light grey (similar RAL 7035)
- Isolation class II
- Protection class IP 20
- Dust protection cover for not clogged jacks
- Cord grip and screen contact undetectably connected with insertion
- Radial screen storage, screen contacts are extensive for optimal contact
- Clear color code of the LSA-Plus contacts with color code A and B for EIA/TIA 568 A
- Construction according to E DIN IEC 60603-7-5:2003-03
- DIN EN 50173-1:2003-06: category 5, screened
- ISO / IEC 11801:2002: Category 5, screened
- EIA / TIA 568 B.2-2001: Category 5e
- IEC/PAS 60603-7-3:2004: shielded 100 MHz
- Use in Gigabit-Ethernet networks
- Screening matches the DIN EN 55022 class B and DIN EN 50082 part 1
- Suitable for PoE (Power over Ethernet), according to IEEE 802.3af
- LSA-Plus contacts for conductor 0,4 to 0,6 mm
- AWG 26 to AWG -> 22; external bore -> 0,7 to 1,1 mm
- Up to 50 times available



Art.-No. 34110

Euro/piece without value added tax

84,-

Accessory

Switch for DIN-rail montage

10/100 Mbit/s Ethernet Switch



- Up to 5 data end device
- 6 division unit (1TE=18mm)
- 6x RJ-45 jack
- Light grey (similar RAL 7035)
- Isolation class II
- Protection class IP20
- Dust protection cover for not used jacks
- Integrated power supply, 230V, 50Hz
- Cascade able (4096 MAC-addresses)
- Auto partitioning
- Auto negation
- Full-/ half duplex
- MDI / MDIx
- Function: Store and forward
- Layer 2 Switch

Art.-No. 34200

Euro/piece without value added tax

222,-

Switch for DIN-rail montage Master

10/100/1000 Mbit/s Ethernet Switch Master

- Up to 5 connected devices
- 6 division unit (1TE = 18mm)
- 6x RJ-45 jacks
- Light grey (similar RAL 7035)
- Isolation class II
- Protection class IP20
- Dust protection cover for not used jacks
- Integrated power supply, 230V, 50Hz
- Integrated interface for connection of a Slave-Switch SRS5
- Cascade able (4096 MAC-addresses)
- Auto partitioning
- Auto negation
- Full-/ half duplex
- MDI / MDIx
- Function: Store and forward
- Layer 2 Switch



Art.-No. 34210

Euro/piece without value added tax

266,-

Accessory

Switch for DIN-rail montage Slave

10/100/1000 Mbit/s Ethernet Switch Slave



- Up to 5 connected devices
- 6 division unit (1TE = 18mm)
- 6 x RJ-45 jacks
- Light grey (similar RAL 7035)
- Isolation class II
- Protection class IP20
- Dust protection cover for not used jacks
- Integrated power supply, 230V, 50Hz
- Integrated interface for connection with a Master-Switch SRM5
- Cascade able (4096 MAC-addresses)
- Auto partitioning
- Auto negation
- Full-/ half duplex
- MDI / MDIx
- Function: Store and forward
- Layer 2 Switch

Art.-No. 34220

Euro/piece without value added tax

120,-

Universal router for DIN-rail montage

Universal router appropriate for ISDN and/or DSL

- 6 division unit (1 TE= 18mm)
- 3x RJ-45 jacks
- Light grey (similar RAL 7035)
- Isolation class II
- Protection class IP 20
- Dust protection cover for not used jacks
- Integrated power supply, 230 V, 50Hz
- ISDN-access by RJ-45 jack or screwing terminal
- DSL-access by RJ-45 jack
- DYN-DNS compatible
- Remote activation per ISDN possible
- Illuminating diode for operation display and service functions
- Launching with standard-browser surface
- Operating system-independent



Art.-No. 34300

Euro/piece without value added tax

353,-

Accessory

SVR Accumulator



Accumulator for emergency power supply

- DIN rail-mounted device for the Type EN 50022-35 X 7,5
- Width: 8 division units (1TE = 18mm)
- Protection class IP20
- Accumulator 1,2Ah
- Output voltage 12V (DC)
- By series connection of 2 SVR accumulators you can realize a 24 hours emergency power supply.
- Discharge performance e.g.: under pressure, the eibPort needs 80mA (minimum 8 hours)
- For charging the attachment SVR power supply is necessary

Art.-No. 35410

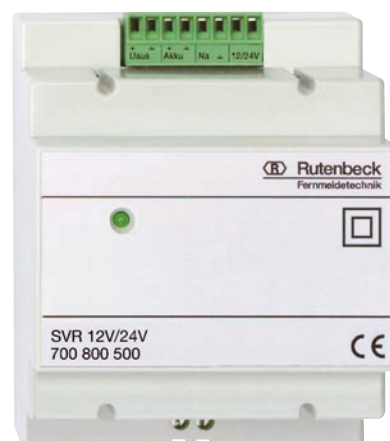
Euro/piece without value added tax

90,-

SVR power supply

Power supply for charging of the SVR accumulator

- DIN rail-mounted device for the Type EN 500022-35 X 7,5
- Width: 4 division unit (1TE = 18mm)
- Protection class IP20
- Short circuit- and idling fixity
- Operation display (LED)
- Power fail Signal in case of power failure (open collector output)
- Power failure bridging: 100 ms at 0V
- Initial power: 92-265V AC at 47-63Hz
- Output power: 13,8/27,5V DC +/-1%
- Output current: 1,5A
- Power limitation: 1,7A



Art.-No. 35420

Euro/piece without value added tax

126,-

Example facility coupling eibPort

Visualization in every building/floor.

Visualization/coupling is independent from a centre.

Central visualizations can exist at every point in the LAN/Internet.

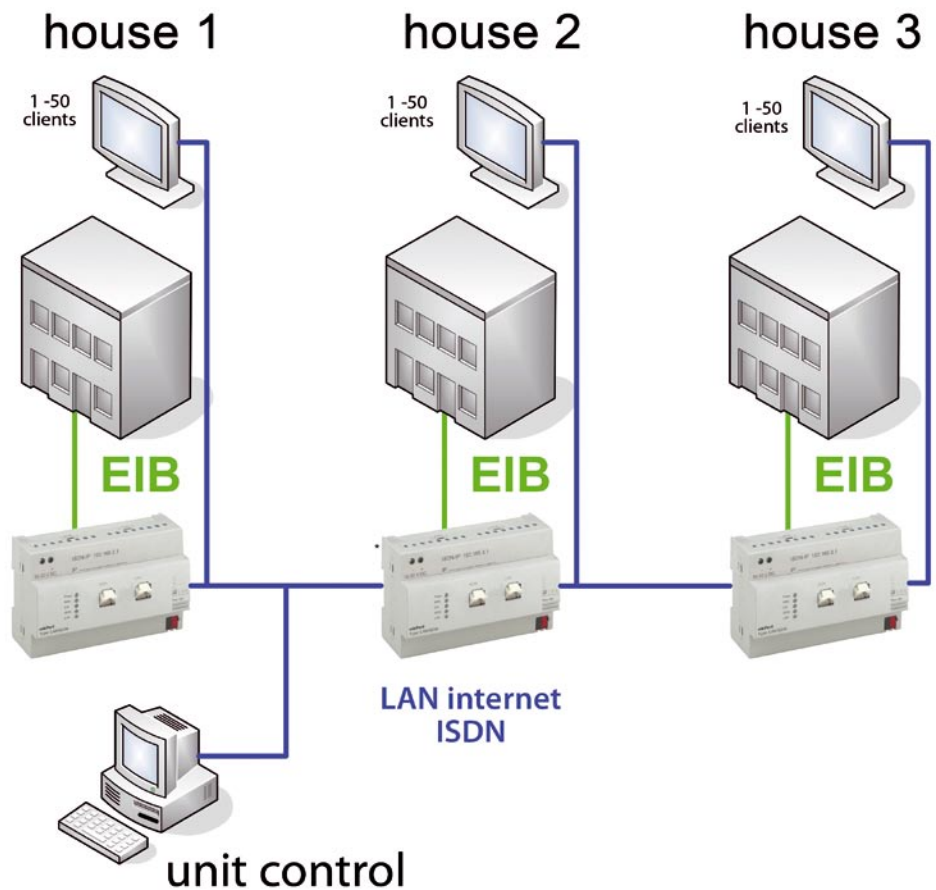
No licenses costs and independent from the operating system.

All EIB/KNX-telegrams are being linked.

Overlapping of EIB-Groupaddresses can be avoided.

The installation can be maintained and programmed by remote access.

For visualization a java able, a javaScript able browser, the Media-CenterEdition, a J2ME application or a separate Java client can be used.

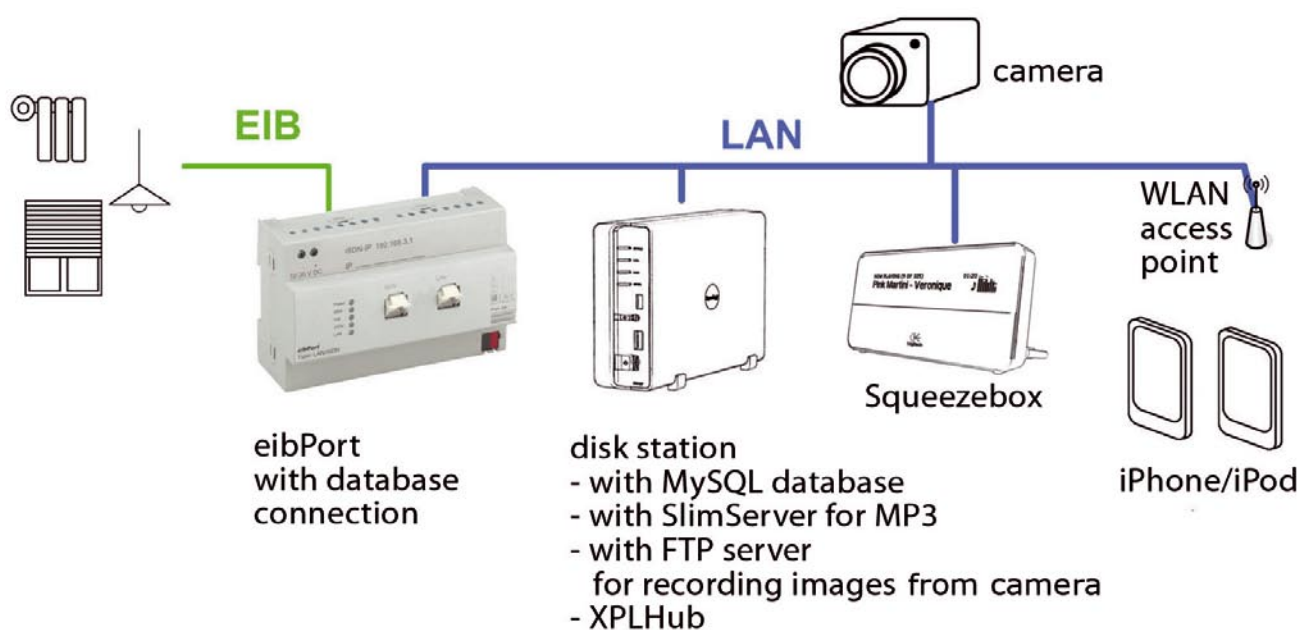


Example malfunction message inbox

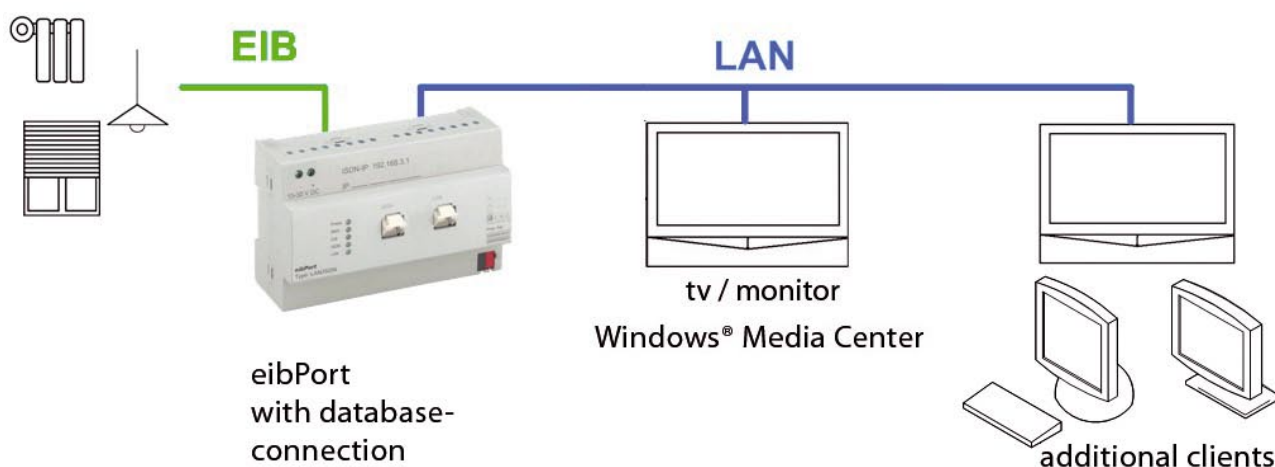


Example

iPhone/iPod visualization

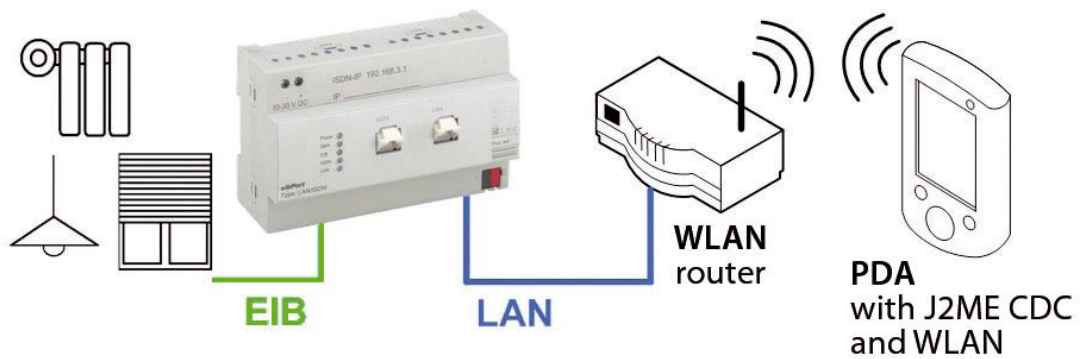


Microsoft MCE visualization

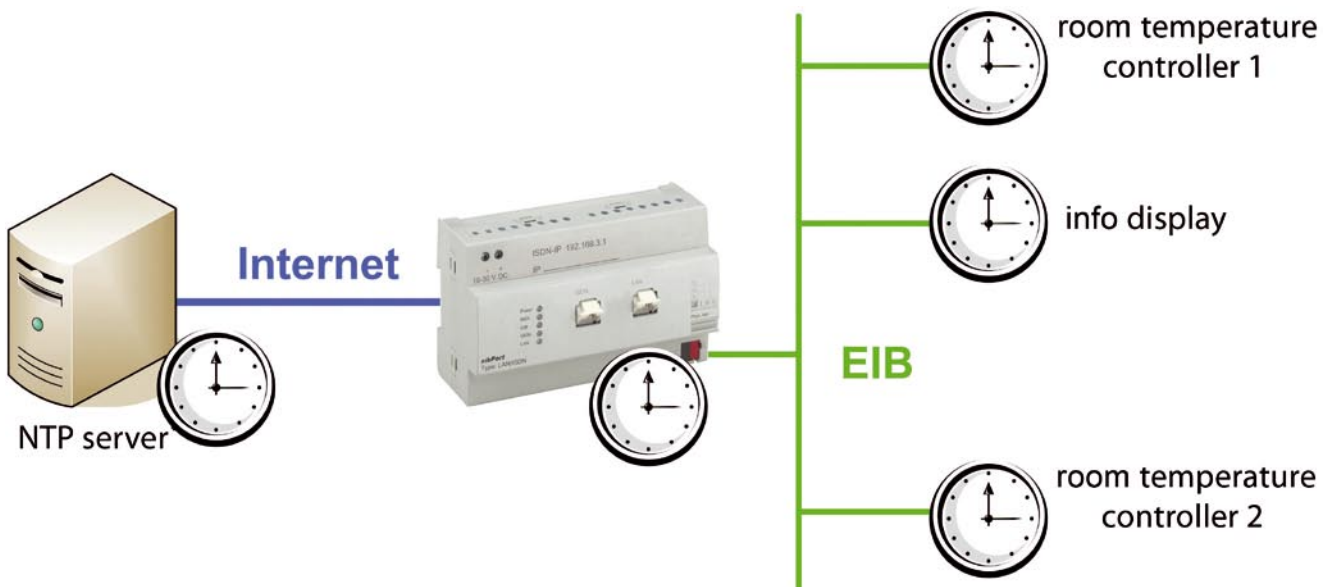


Example

PDA visualization

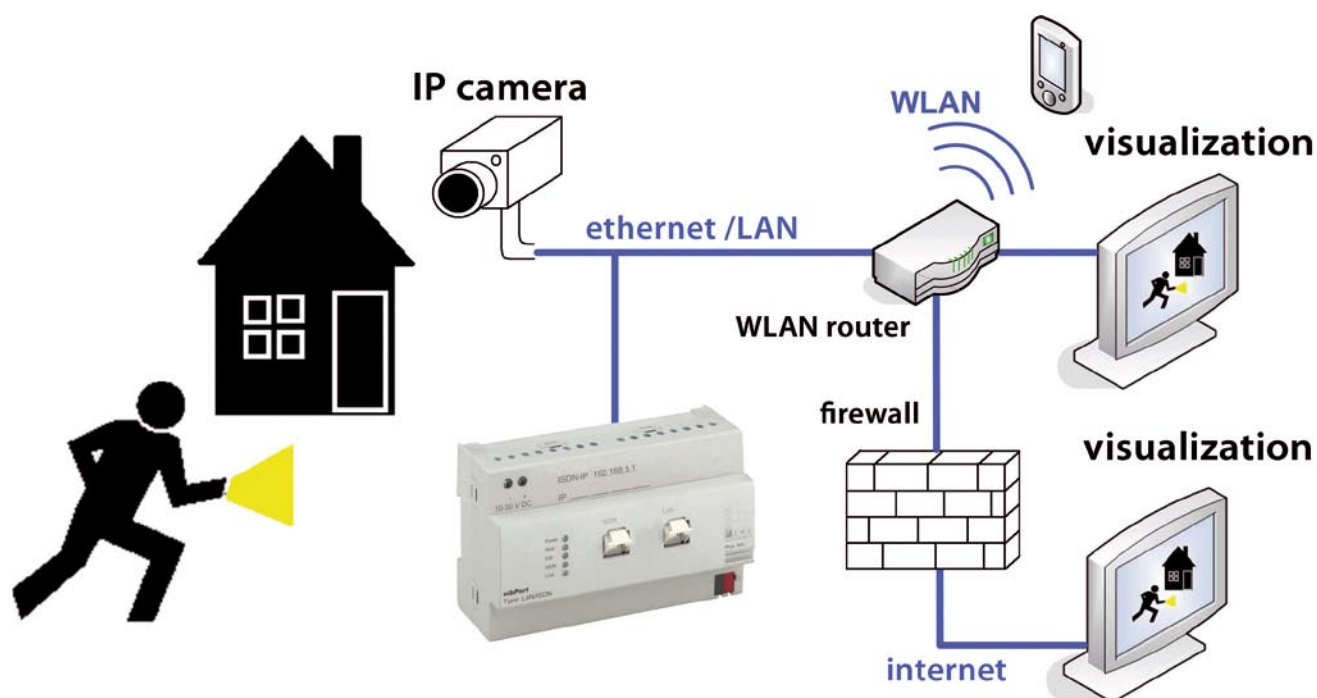


Time and date sender

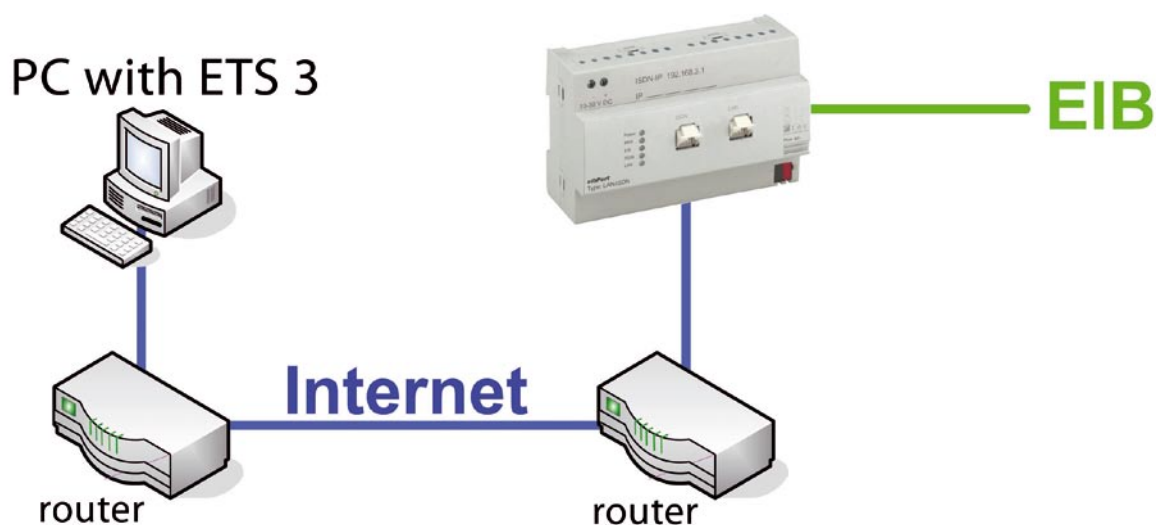



Example

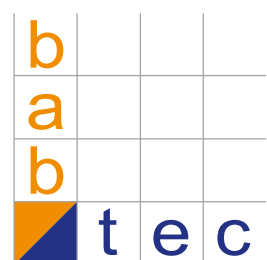
Remote surveillance



Remote maintenance per iETS



b			
a			
b			
 t	e	c	



b.a.b -technologie gmbh
Rosemeyerstraße 14
44139 Dortmund

phone: +49 231 - 476 425 - 30

fax: +49 231 - 476 425 - 59

e-mail: info@bab-tec.de

internet: www.bab-tec.de